



MANUAL

LANTIME M100/GPS

NTP Time Server (Railmount)

24th April 2014

Meinberg Radio Clocks GmbH & Co. KG

Table of Contents

1	Impressum	1
2	Safety instructions for building-in equipment	2
3	Quick Start Guide	3
4	Network Timeserver with GPS synchronized time base	5
5	The Modular System LANTIME	6
5.1	Supported Network Services	7
5.2	Additional Features	7
5.3	User Interface	7
5.4	Options	8
5.5	Why to use a Network Time Server?	8
6	Network Time Protocol (NTP)	9
6.1	NTP Target	9
6.2	NTP-Client Installation	9
7	GPS satellite controlled clock	11
7.1	GPS Clock Features	11
7.2	Time Zone and Daylight Saving	12
8	Mounting the GPS Antenna	13
8.1	Example:	13
8.2	Antenna Short-Circuit Assembly with surge voltage protection	14
9	Booting the GPS170 receiver	15
10	Booting the Single Board Computer	16
11	The graphical user interfaces	17
12	The WEB Interface	18
12.1	Configuration: Main Menu	19
12.2	Configuration: Ethernet	20
12.2.1	SYSLOG Server	21
12.3	Network interface specific configuration	21
12.3.1	IPv4 addresses and DHCP	21
12.3.2	IPv6 addresses and autoconf	22
12.3.3	High Availability Bonding	22
12.3.4	Additional Network Configuration	23
12.4	Configuration: Notification	24
12.4.1	Alarm Events	25
12.4.2	E-mail messages	26
12.4.3	Windows Popup Messages	26
12.4.4	SNMP-TRAP messages	26
12.4.5	VP100/NET wall mount display	26
12.4.6	User defined Alarm scripts	26
12.4.7	NTP Client Monitoring	27
12.4.8	Alarm messages	27
12.5	Configuration: Security	28
12.5.1	Password	29
12.5.2	HTTP Access Control	29
12.5.3	SSH Secure Shell Login	29

12.5.4	Generate SSL Certificate for HTTPS	31
12.5.5	NTP keys and certificates	32
12.5.6	SNMP Parameter	32
12.6	Configuration: NTP	33
12.6.1	NTP Authentication	35
12.6.2	NTP AUTOKEY	36
12.7	Configuration: Local	39
12.7.1	Administrative functions	40
12.7.2	User Management	40
12.7.3	Administrative Information	41
12.7.4	Software Update	43
12.7.5	Automatic configuration check	44
12.7.6	Get Diagnostics Information	44
12.7.7	Receiver Information	45
12.7.8	Web interface language	45
12.8	Configuration: Statistics	46
12.8.1	Statistical Information	47
12.9	Configuration: Manual	48
13	The Command Line Interface	49
13.1	CLI Ethernet	50
13.2	CLI Notification	52
13.3	CLI Security	54
13.4	CLI NTP Parameter	56
13.4.1	CLI NTP Authentication	57
13.5	CLI Local	57
14	SNMP Support	60
14.1	Configuration over SNMP	61
14.1.1	Examples for the usage of the SNMP configuration features	62
14.1.2	Further configuration possibilities	63
14.1.3	Send special timeserver commands with SNMP	63
14.1.4	Configuration of the timeserver with SNMP: Reference	65
14.2	SNMP Traps	70
14.2.1	SNMP Trap Reference	70
15	Attachment: Technical Information	71
15.1	Skilled/Service-Personnel only: Replacing the Lithium Battery	71
15.2	Technical Specifications LANTIME M100	71
15.3	Front Panel Connectors	72
15.4	TERMINAL (Console)	72
15.5	Technical Specifications GPS Antenna	73
15.6	Global Configuration File	74
15.7	Global Option File	76
15.8	Third party software	77
15.8.1	Operating System GNU/Linux	77
15.8.2	Samba	77
15.8.3	Network Time Protocol Version 4 (NTP)	78
15.8.4	mini_httpd	79
15.8.5	GNU General Public License (GPL)	80
15.9	Reference	84

1 Impressum

Meinberg Radio Clocks GmbH & Co. KG
Lange Wand 9, 31812 Bad Pyrmont - Germany

Phone: + 49 (0) 52 81 / 93 09 - 0
Fax: + 49 (0) 52 81 / 93 09 - 30

Internet: <http://www.meinberg.de>
Mail: info@meinberg.de

Date: 2008-11-26

2 Safety instructions for building-in equipment

This building-in equipment has been designed and tested in accordance with the requirements of Standard IEC60950-1 "Safety of Information Technology Equipment, including Electrical Business Equipment".

During installation of the building-in equipment in an end application (i.e. rack) additional requirements in accordance with Standard IEC60950-1 have to be taken into account.

NOTE: First attach the case to protective earth - before you connect the M100 with the power line.



GND

General Safety instructions

- The building-in equipment has been evaluated for use in office environment (pollution degree 2) and may be only used in this environment. For use in rooms with a higher pollution degree more stringent requirements are applicable.
- The equipment/building-in equipment was evaluated for use in a maximum ambient temperature of 40°C.
- The building-in equipment may not be opened.
- Protection against fire must be assured in the end application.
- The ventilation opening may not be covered.

For AC Supply 100-240VAC

- The building-in equipment is a class 1 - equipment and must be connected to an earthed outlet (TN Power System).
- For safe operation the building-in equipment must be protected by max 16 A fuse in the power installation system.
- Disconnection of the equipment from mains is done by pulling the mains plug at the outlet. Don't use the connector at the module for disconnection from mains.

For DC Supply 100-240VDC

- The device can be disconnected outside the unit in accordance with the regulations as in EN 60950 (e.g. through primary side line protection).
- Assembling and disassembling of the power connector is only allowed if the device is disconnected from power supply (e.g. through primary side line protection).
- All feed lines are sufficiently protected and dimensioned.

Fuse: T3A
Connector Diameter: 1mm² - 2,5mm² / 17AWG - 13AWG

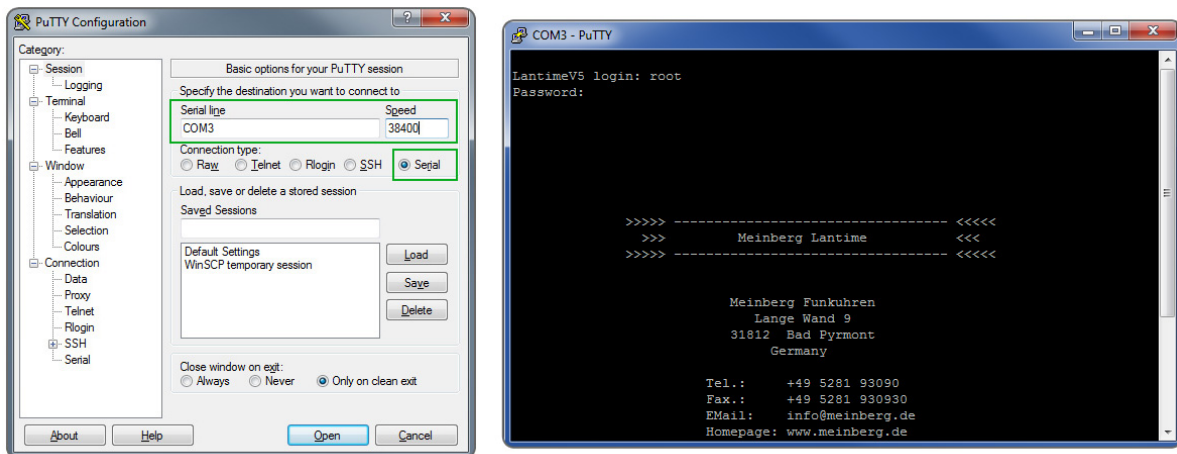
3 Quick Start Guide

In order to configure an IP address you can connect with a serial terminal from your PC using a NULL MODEM cable. Please connect your PC's serial port to the TERM connector of your LANTIME. You can use e.g. the standard Hyperterminal program shipped with your Windows operating system.

Windows VISTA and WIN 7 operating systems may not have this terminal program. Alternatively PUTTY can be used here: <http://www.putty.org/>.

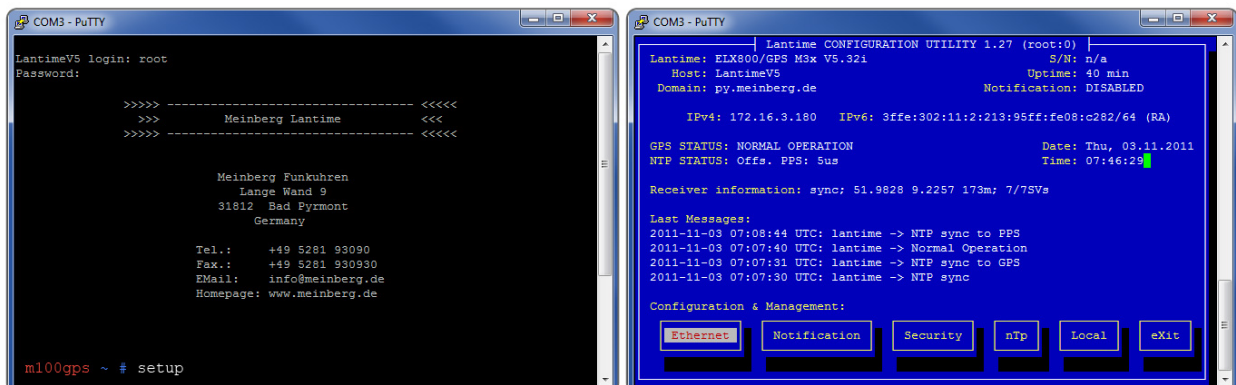
You will need a serial to USB interface if your computer have no serial port. Connect this interface with an Null-Modem cable to your LANTIME. If the driver for the Serial-USB connector should not be installed automatically, and/or already exists on the system, then you have to install the program manually.

Please set your terminal program to 38400 Baud, 8 Databits, no parity and 1 Stopbit (38400 8N1). The recommended terminal emulation is VT100. As soon as you send a CR (press RETURN), the login prompt asks for a user id and password:

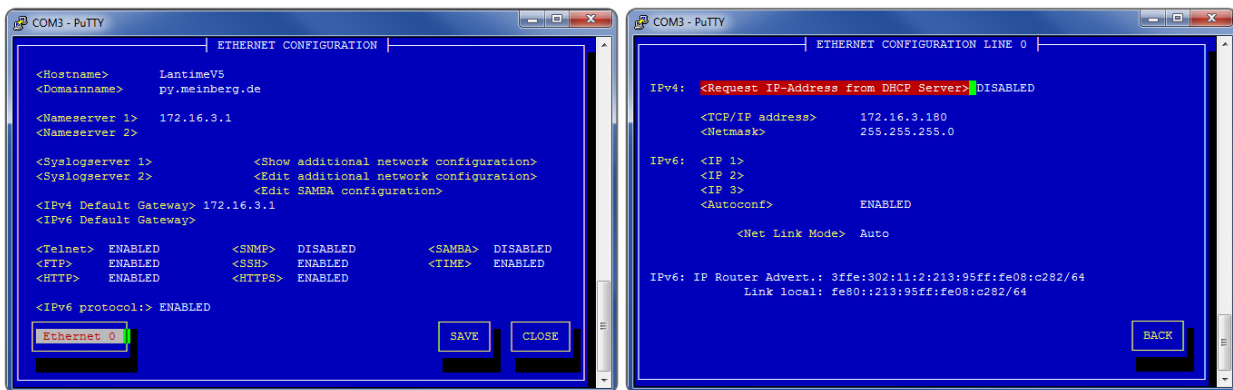


The default login name is **root**
and the default password is **timeserver**.

After entering the correct user/password combination, a welcome screen message and the command prompt will appear.



Please enter „setup“ (followed by RETURN) for the configuration program. You can move around using the TAB and/or cursor keys. In order to setup the IP address, please open the „ETHERNET 0“ section on the ETHERNET page, modify the parameters for IP address, subnet mask and default gateway and save the new settings.



You can leave the setup program with the „Exit“ button and then enter „exit“ on the command prompt to close the serial connection. Afterwards you should be able to connect to the unit over the network using your web browser or Telnet/SSH client. As soon as the IP address has been assigned, the LANTIME will be capable of providing NTP synchronization to clients.

If the GPS receiver remains asynchronous (GPS status does not show „NORMAL OPERATION“) please check antenna cabling and the antenna position. The antenna has to be installed without any obstructions to the sky. Please note that the first synchronization of the GPS receiver at a new geographical position will take up to 12 minutes. The regular cold start time is less than 5 minutes.

4 Network Timeserver with GPS synchronized time base

The **LANTIME** (Local Area Network Time Server) provides a high precision time base to a TCP/IP network (Stratum-1-Server). The NTP (Network Time Protocol) is used to synchronize all NTP clients with the reference. The several LANTIME variants differ from each other by the time reference and output configuration. A GPS or combined GPS/GLONASS receiver, a long wave receiver (like DCF77, MSF or WWVB) or an IRIG time code receiver can be integrated as an internal reference as well as a combination of these references (hybrid system). External references are also possible.

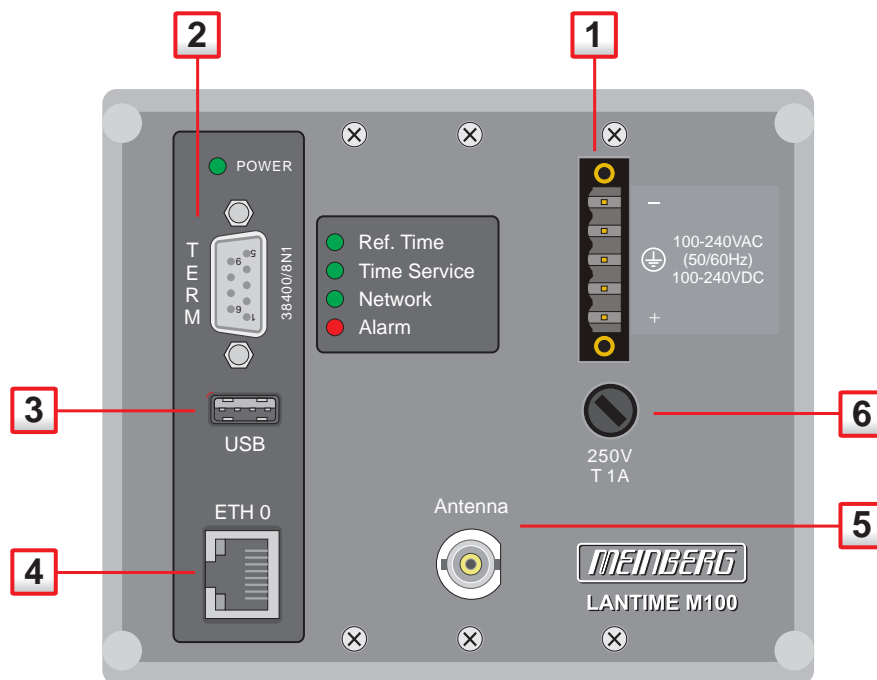
The LANTIME system is a set of equipment composed of a internal receiver, a single-board computer and a power supply, all installed in a metal 19 inch modular chassis and ready to operate. A simplified LINUX operating system is installed on the single-board computers flash disk. Eight push buttons and a display can be used to configure and monitor the time server.

After the network connection has been established the time server can also be configured and monitored remotely from a workstation via TELNET or FTP. An integrated web server enables access to the LANTIME by using an ordinary web browser.

5 The Modular System LANTIME

The LANTIME M100 includes a reference clock (e.g.: satellite controlled clock GPS170 radio clock), a single-board computer SBC LX800 500 MHz with integrated network card, and a power supply unit, all installed in a metal desktop case and ready to operate. The interfaces provided by LANTIME are accessible via connectors in the front panel of the case. Details of the components are described below.

FRONT VIEW:



DEUTSCH

1. Spannungsversorgung
2. Terminal RS232 D-SUB, 9pol. Power LED (grün)
3. USB Port
4. Netzwerk Anschluss ETH0, 10/100Mbit RJ45
5. GPS Antenne, BNC
6. Sicherung (250V / T 1A)

ENGLISH

1. Power supply connector
2. Terminal RS232 D-SUB, 9pin. Power LED (green)
3. USB Port
4. Network connector ETH0, 10/100 Mbit RJ45
5. GPS Antenna, BNC
6. Fuse (250V / T 1A)

The implemented NTPD distributes the reference time received by the GPS receiver. Information on the status of the NTP service (NTPD) can be checked using the web interface or setup program as well as standard NTP mode 6 packets (as used by the ntpq utility).

The installation of a LANTIME NTP time server is a simple and straightforward process. After setting the network address, the subnetmask and the default gateway using a serial connection, the system can be completely managed and monitored with its powerful and extensive web interface or a text based connection (serial TERM interface, SSH or Telnet).

The Linux system supports a number of network protocols: NTP, HTTP(S), FTP, SSH, Telnet, Time/Day-time, SFTP and SNMP. For security reasons each protocol can be disabled/enabled as required. Changes in the

receiver status, errors or other important events are logged in the local system log and can be forwarded to an external SYSLOG server. Alarm and status messages can be sent as SNMP traps or e-mail messages (SMTP). Furthermore all alarm messages can be displayed on wall mount displays (Meinberg VP100/20/NET). In order to avoid a service interruption several LANTIME NTP servers can be installed in a network to maintain a high level of reliability and offer protection against hardware and software failures.

5.1 Supported Network Services

The following network services are provided via RJ45 10/100Base-T Ethernet (Auto sensing):

- NTP v2, v3, v4
- NTP broadcast mode
- NTP multicast
- NTP symmetric keys
- NTP Autokey
- Simple Network Time Protocol (SNTP)
- TIME
- SNMP v1,2,3 with extended SNMP-Agent and SNMP-Traps for NTP and reference clock status

- DHCP Client
- NFS
- TELNET
- FTP
- HTTP
- HTTPS with Openssl2
- SSH2 Secure Shell Login
- Alarm messages via e-mail

- IPv6 3 global IPv6 addresses configurable
Autoconf Feature to be disabled
supported network services: NTP, HTTP, HTTPS, SNMP, SSH

- Windows „net time“ via NETBIOS
- Winpopup (Window Mail)

5.2 Additional Features

- external NTP timeserver
- free configuration of NTP: thereby MD5 authentication and access control via address & mask restriction
- extended menu guidance for configuration and monitoring via Telnet, SSH or serial terminal interface
- extended HTTP statistic support with long-term graphic and access statistic to NTP
- alarm messages can be displayed on external large display VP100/20/NET
- USB memory stick slot for extended functionality: software update, transfer of secure certificates, log files and configurations, keypad locking

5.3 User Interface

- Terminal connection via serial interface, status LED
- Web browser interface with graphical statistic of the one-day cycle offsets
- Telnet or Secure Shell Login for password protected operation of the Linux operating system
- FTP access for updating the operating system and downloading log files
- Simple Network Management Protocol for automatically SNMP-Traps in case of alarm

- SYSLOG messages can be passed to different computers
- Configurable e-mail notification
- Simulation of a synchronous radio clock in order to operate without antenna

5.4 Options

Some LANTIME models can be ordered with additional network interfaces, signal outputs and other options, for example:

- up to 4 Ethernet RJ45 connectors in 1U and 8 Ethernet connectors in 3U models
- Frequency and pulse outputs via BNC connectors (e.g. 10 MHz, 2.048 MHz, PPS)
- higher free running accuracy with optional oscillators (OCXO)
- IRIG-B outputs
- ANZ14NET or VP100/20/NET as display connected via network

5.5 Why to use a Network Time Server?

In principle it is possible to synchronize your computers with time servers on the internet. However, a lot of our customers rely on their own time server in their network environment for security and/or maintainability reasons.

- Particularly in the case of our LANTIME you or a responsible person can be notified by mail or SNMP trap if there is a malfunction in your time synchronization.
- The clients on the network do not depend on an active internet connection.
- The clients on the network do not depend on the availability of an external time server.
- A test of other freely available time servers reported that many NTP servers distributed a significantly wrong time, although they were classified as stratum-1 time servers. This is the responsibility of the server's administrators.
- If an internet connection is working properly then NTP can determine and account for the packet transmission delays quite reliable. However, if the internet connection is at its capacity limit, time synchronization can be significantly degraded due to high dispersion in packet transmission delays. Reasons for this may be hacker attacks, which must not address your own network, or new viruses causing a huge flood of emails, like it has already happened in the past.

In the United States the U.S. Naval Observatory (USNO) has a similar function to spread the legal time as the PTB in Germany, and also operates publicly available NTP servers for a long time. Those NTP servers are more and more constrained by "bad" clients, which makes the future of the public service questionable. There are already precautions to limit the affect of such clients. Dave Mills, the originator of NTP, cooperates with the USNO and has already adverted this in the NTP news group.

The topics outlined above should provide some arguments to install an own time server, if an accurate time is a requirement for the reliable operation of a local network.

6 Network Time Protocol (NTP)

NTP is a common method for the synchronization of hardware clocks in local and global networks. The basic concept, version 1 [Mills88], was published in 1988 as RFC (Request For Comments). Experiences acquired from its practical use on the Internet was followed by version 2 [Mills89]. The NTP software package is an implementation of the actual version 3 [Mills90], based on the specification RFC-1305 from 1990 (directory doc/NOTES). Permission to use, copy, modify and distribute this software for any purpose and without fee is hereby granted (read File COPYRIGHT).

NTP operates in a way that is basically different from that of most other timing protocols. NTP does not synchronize all connected clocks; instead it forms a hierarchy of timeservers and clients. Each level in this hierarchy is called a stratum, and Stratum 1 is the highest level. Timeservers at this level synchronize themselves by means of a reference time source such as a radio controlled clock, satelliet receiver or modem time distribution. Stratum 1 Servers distribute their time to several clients in the network which are called Stratum 2.

Highly precise synchronization is feasible because of the several time references. Every computer synchronizes itself with up to three valued time sources. NTP enables the comparison of the hardware times and the adjustment of the internal clock. A time precision of 128 ms, and often better than 1 ms, is possible.

6.1 NTP Target

The NTP software package was tested on different UNIX systems. Many UNIX systems have an NTP client pre-installed. Only some basic configurations need to be done (/etc/ntp.conf). NTP clients as freeware or shareware are also available for most other operating systems like Windows 7/Vista/XP/NT/2000/98/95/3x, OS2 or MAC. The following WEB site is recommended to get the latest version of NTP:

<http://www.ntp.org>

You can find more information on our web page at: <http://www.meinberg.de/english/sw/ntp.htm>

6.2 NTP-Client Installation

The following example shows the installation of a NTP client under UNIX. First make sure that there is no NTP installed on your computer because many UNIX operating systems include NTP already.

The shipped source code of the NTP daemon has to be compiled on the target system. Using the enclosed script file configures the compilation of the NTP daemon and all tools.

configure

All necessary information from the system will be collected and the corresponding make files will be generated in the subdirectories.

After that the NTP daemon and all needed utilities will be generated. Therefore type:

make

While compiling the NTP daemon several warnings may appear. These warnings are mostly unimportant. In case of problems during the compilation read the system dependent notes in the subdirectory 'html'.

Afterwards the generated programs and tools have to be moved in the corresponding directories. Therefore type:

make install

The time adjustment can occur in different ways. Either the system time can be set once by using the tool "ntpdate lantime" or the NTPD daemon is started. In the first case it is recommended to set the time automatically with "cron" or once when booting the system. The second case is described below.

First a file named `/etc/ntp.conf` has to be generated with an editor. Adapting the file to Meinberg LANTIME it should contain the following:

```
# Example for /etc/ntp.conf for Meinberg LANTIME
server 127.127.1.0          # local clock
server 172.16.3.35         # TCPIP address of LANTIME
# optional: Driftfile
# driftfile /etc/ntp.drift
# optional: activate all messages in syslogfile
# logconfig =all
```

The NTP daemon is started with 'ntpd' or, using 'rc.local', while booting the system. Status messages during operation are saved in `/var/adm/messages` and `/var/adm/syslog` (corresponding to the syslog configuration).

e.g.: tail /var/log/messages

Shows the last lines from the file `messages`. The status messages can also be redirected in a log file by using the following option:

ntpd -llogfile

The command 'ntpq' in the directory `ntpq` requests the actual status of the NTP daemon (see also `doc/ntpq.8`).

e.g.: ntpq/ntpq

An interpreter appears; Type "?" for a list of all available commands. The command 'peer' is used to list all active reference clocks:

remote	refid	st	t	when	poll	reach	delay	offset	jitter
LOCAL(0)	LOCAL(0)	3	l	36	64	3	0.00	0.000	7885
lantime	.GPS.	0	l	36	64	1	0.00	60.1	15875

with the following meaning:

- remote: list of all valid time servers (ntp.conf)
- refid: reference number
- st: actual stratum value (hierarchy level)
- when: last request (seconds)
- poll: period of requesting the time server (seconds)
- reach: octal notation of the successful requests, shifted left
- delay: delay of the network transmission (milliseconds)
- offset: difference between system time and reference time (milliseconds)
- jitter: variance of the offsets (milliseconds)

Repeatedly 'peer' commands lets the user observe the accuracy of the NTP daemon. Every 64 seconds (value of -poll) a new time string is read in from the radio clock. The NTP daemon needs approx. 3...5 minutes for initialisation. This is indicated by a wildcard (*) on the left side of the remote name.

The NTP daemon terminates itself if the system time differs from the UTC time by more than 1024 seconds. This often happens when the time zone is not correctly set (see also system manual "zic" or "man zic").

7 GPS satellite controlled clock

A Meinberg GPS170 satellite controlled radio clock is used as a reference time base. The GPS170 satellite receiver clock provides extremely precise time. The clock has been developed for applications where conventional radio controlled clocks can not meet the growing demand for precision time. The advantage of the GPS clock is that it can provide highly precise time worldwide, 24 hours a day using the Global Positioning System.

The Global Positioning System (GPS) is a satellite-based radio-positioning, navigation, and time-transfer system. It was installed by the United States Department of Defense and provides two levels of accuracy: The Standard Positioning Service (SPS) and the Precise Positioning Service (PPS). SPS has been made available to the general public, but the PPS is encrypted and only available for authorized (military) users.

GPS accurately measures the propagation time of signals transmitted from satellites to the user's receiver. A nominal constellation of 24 satellites together with 3 active spares, in six orbital planes at 20,000 km altitude provides a minimum of four satellites in view 24 hours a day at every point on the globe. Four satellites need to be received simultaneously to determine both the receiver position (x, y, z) and the receiver clock offset from GPS system time. All the satellites are monitored by ground control stations which determine the exact orbit parameters and clock offsets of the satellites' onboard atomic clocks. These parameters are uploaded to the satellites and become part of a navigation message, which is retransmitted by the satellites and passed on to the user's receiver.

The high precision orbit parameters of the satellites are called ephemeris parameters, and a reduced precision subset of the ephemeris parameters is called a satellite's almanac. While ephemeris parameters must be evaluated to compute the receiver's position and clock offset, almanac parameters are used to check which satellites are in view from a given receiver position at a given time. Each satellite transmits its own set of ephemeris parameters and almanac parameters of all existing satellites.

7.1 GPS Clock Features

The GPS clock module is a 100 mm x 160 mm microprocessor board, and is connected to the antenna/converter unit by a 50 ohm coaxial cable (refer to "Mounting the Antenna"). DC power is fed to the antenna/downconverter via the antenna cable. An optional antenna splitter is available to operate up to four receivers from a single antenna.

The navigation message coming in from the satellites is decoded by the GPS clock's microprocessor in order to track the GPS system time with an accuracy of better than 500 ns (or 250 nsec OCXO). Compensation of the RF signal's propagation delay is done by automatic determination of the receiver's position on the globe. A correction value computed from the satellites' navigation messages increases the accuracy of the board's TCXO or OCXO to 10^{-9} and automatically compensates for the oscillators aging. The last recent value is restored from the battery buffered memory at power-up.

7.2 Time Zone and Daylight Saving

GPS system time differs from the universal time scale (UTC) by the number of leap seconds which have been inserted into the UTC time scale since GPS was initiated in 1980. The current number of leap seconds is part of the navigation message supplied by the satellites, so the internal real time of the GPS170 is based on UTC time scale. Conversion to local time and annual daylight saving time can be done by the receiver's microprocessor if the corresponding parameters are set up by the user.

8 Mounting the GPS Antenna

The GPS satellites are not stationary but circle round the globe in a period of about 12 hours. They can only be received if no building is in the line-of-sight from the antenna to the satellite, so the antenna/converter unit must be installed in a location from which as much of the sky as possible can be seen. The best reception is given when the antenna has a free view of 8° angular elevation above horizon. If this is not possible the antenna should be installed with a mostly free view to the equator because of the satellite courses which are located between latitudes of 55° North and 55° South. If even this is not possible problems occur especially when at least four satellites for positioning have to be found.

The antenna/converter unit can be mounted on a pole with a diameter up to 60 mm or at a wall. A 45 cm plastic tube, two holders for wall-mounting and clamps for pole-mounting are added to every GPS170. A standard coaxial cable with 50 ohm impedance should be used to connect the antenna/converter unit to the receiver. The maximum length of cable between antenna and receiver depends on the attenuation factor of the used coaxial cable.

Up to four GPS170 receivers can be run with one antenna/converter unit by using the optional antenna diplexer. The total length of one antenna line between antenna, diplexer and receiver must not be longer than the max. length shown in the table above. The position of the diplexer in the antenna line does not matter.

High voltage protectors must be installed directly after reaching the indoors. The optional delivered protection kit is not for outdoor usage.

Note:

If the antenna cable was assembled by the user: before powering up the system, make sure that there is no short-circuit between the inner and outer conductor of the antenna cable, because this could cause a fault of GPS170.

8.1 Example:

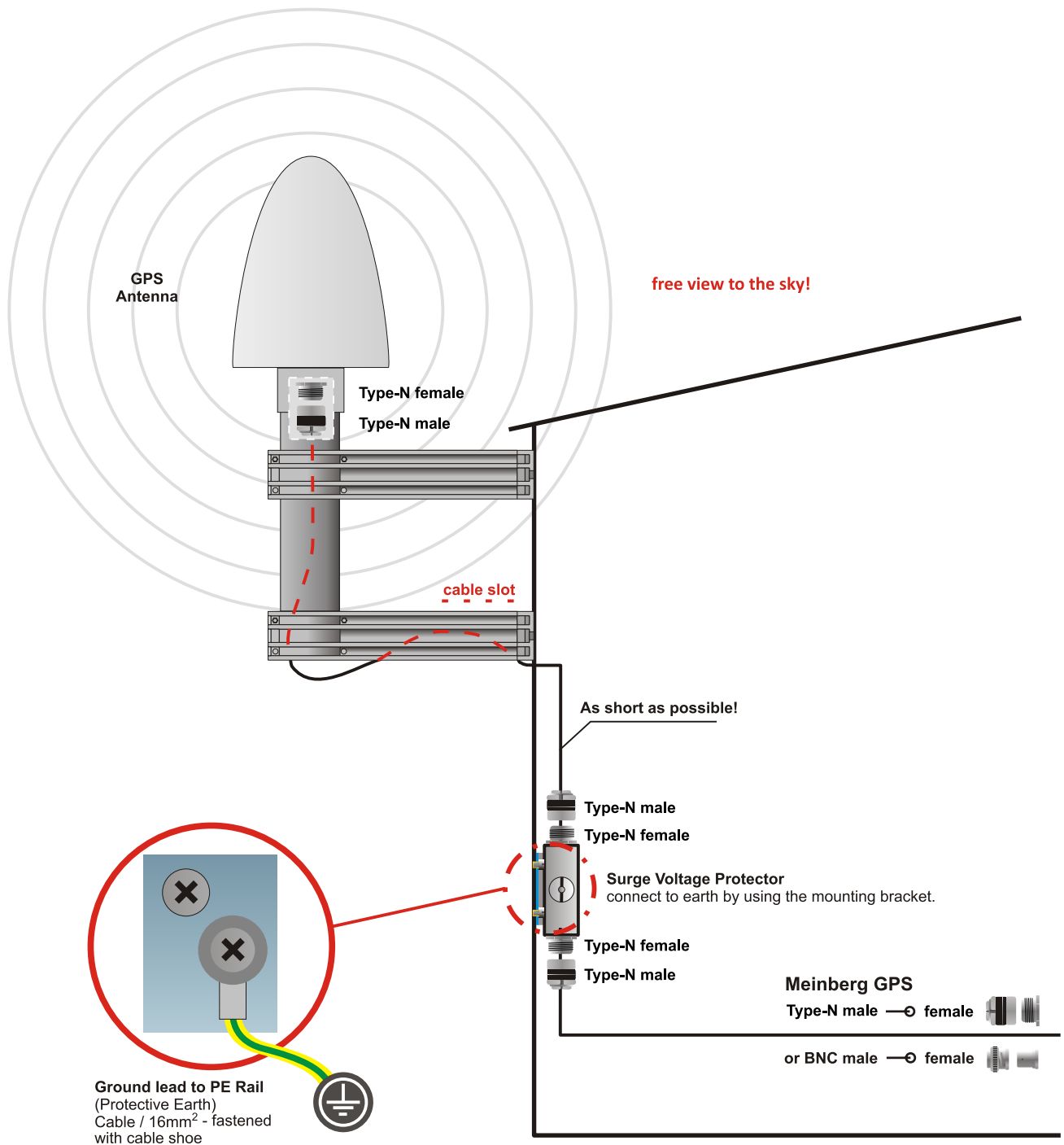
Type of cable	diameter Ø [mm]	Attenuation at 100MHz [dB]/100m	max length. [m]
RG58/CU	5mm	17	300 ⁽¹⁾
RG213	10.5mm	7	700 ⁽¹⁾

(1) These specifications are made for antenna/converter units produced after January, 2005

The values are typically ones; the exact ones are to find out from the data sheet of the used cable

8.2 Antenna Short-Circuit Assembly with surge voltage protection

Optional a surge voltage protector for coaxial lines is available. The shield has to be connected to earth as short as possible by using the included mounting bracket. Normally you connect the antenna converter directly with the antenna cable to the system.



9 Booting the GPS170 receiver

If both the antenna and the power supply have been connected, the system is ready to operate. About 2 minutes after power-up the receiver's oscillator has warmed up and operates with the required accuracy. If the receiver finds valid almanac and ephemeris data in its battery buffered memory and the receiver's position has not changed significantly since its last operation, the receiver can determine which satellites are presently in view. Only a single satellite must be received to synchronize and generate output pulses, so synchronization can be achieved within one minute after power-up.

If the receiver position has changed by more than one hundred kilometers since last operation, the satellites' real elevation and Doppler might not match those values expected by the receiver, and this will force the receiver to start scanning for satellites. This mode is called **Warm Boot** because the receiver can obtain ID numbers of existing satellites from the valid almanac. When the receiver has found four satellites in view it can update its new position and switch to **Normal Operation**. If the almanac has been lost (because the battery has been disconnected) the receiver has to scan for a satellite and read in the current almanac. This mode is called **Cold Boot**. It takes 12 minutes until the new almanac is complete and the system switches to Warm Boot mode, scanning for other satellites.

10 Booting the Single Board Computer

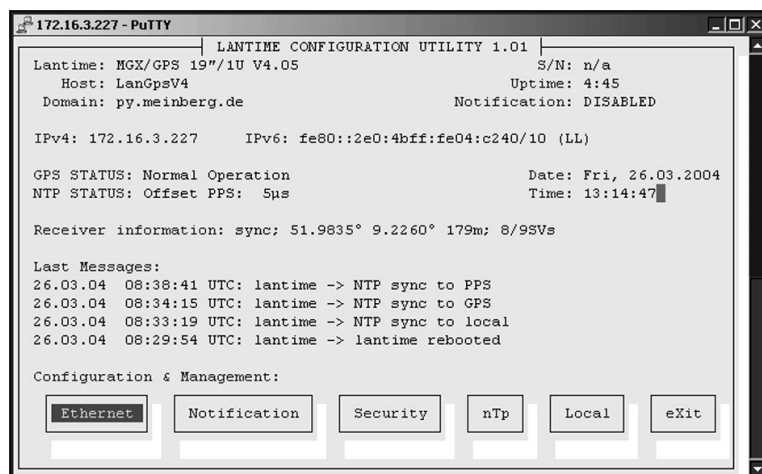
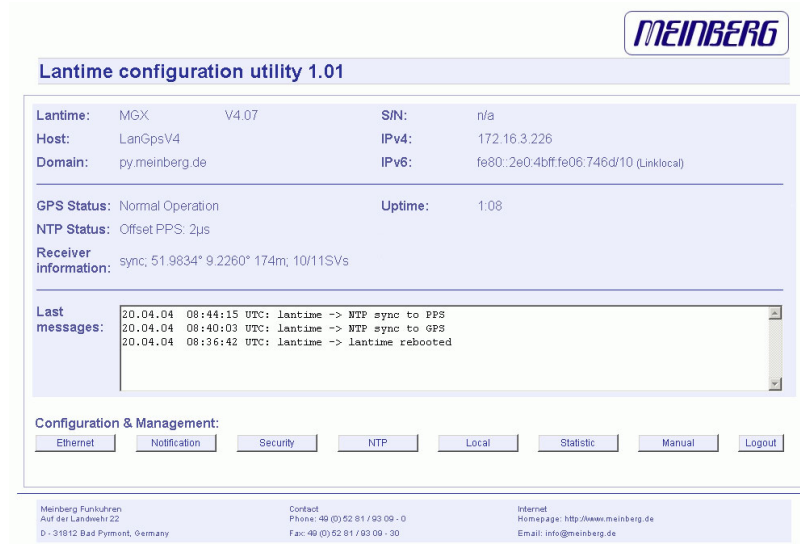
The LINUX operating system is loaded from a packed file on the flash disk of the single board computer to a RAM disk. All files of the flash disk are stored in the RAM disk after booting. Because of that it is guaranteed that the file system is in a defined condition after restart. This boot process takes approx. two minutes. During this boot procedure the ALARM LED will stay RED, it is switched off when the system starts initialization of its services.

After starting up the LINUX system the network function is initiated and the program for communication with the GPS and the NTPD (NTP daemon) is started. After that NTPD starts synchronization with the reference clocks (usual the hardware clock of the single board computer and the GPS receiver). As soon as NTP is ready to provide time synchronization to clients, the "Time Service" LED will turn green.

For the synchronization of the NTPD with the GPS it is necessary that the GPS receiver is synchronous with the GPS time. The status of the GPS receiver is represented by the "Ref. Time" LED which needs to be green (=GPS is synchronized).

11 The graphical user interfaces

The LANTIME offers three different options for configuration and status management: Web interface, Command Line Interface Setup and SNMP. In order to use the SNMP features of your LANTIME, you need special software like management systems or SNMP clients. In order to use the web interface, all you need is a web browser (LANTIME supports a broad range of browsers).



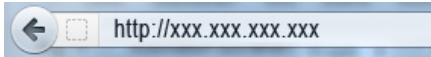
In addition to the SNMP and web interface, you can also manage your LANTIME configuration via a command line interface (CLI), which can be used via a TELNET or SSH connection. A setup tool can be started after login, just type "setup" and press ENTER at the prompt.

There are only a few differences between the web interface and the CLI, most options are accessible from both interfaces (the CLI has no statistical functions).

The above screen shots show the web interface and the Command Line Interface setup tool. The CLI setup tool cannot be used by more than one user at a time, the web interface can be used by more than one user in parallel, but the two or more running sessions may influence each other. We explicitly do not recommend the parallel usage of the configuration interfaces.

12 The WEB Interface

Connect to the web interface by entering the IP of your LANTIME into the address field of your web browser:



If you want to use an encrypted connection, replace the `http://` with `https://` in the above address. You may be prompted to accept the SSL certificate of your LANTIME the first time you are connecting to the system via HTTPS. In both HTTP and HTTPS mode, you will see the following login screen:

GPS controlled NTP time server

GPS:	NORMAL OPERATION	Time:	UTC 09:58:53
NTP:	Offs. PPS:-1us	Date:	Wed, 29.04.2009
Host:	LantimeV5	IP:	172.16.3.209
Contact:	Meinberg	Location:	Germany



Login for configuration and statistic

User:

Password: login

On this start page you see a short status display, which corresponds with the LC display on the front panel of the LANTIME unit. The upper line shows the operation mode of the receiver.

In the upper right corner of the LC display the time and time zone can be found, below that you will find the date and day of the week. On the second line the systems reports the NTP status. During the initial synchronisation process a "NTP: not sync" indicates that the NTP system is not synchronised with the receiver, this can also appear if the receiver loses synchronisation and the NTP switches back to its "LOCAL CLOCK" time source.

The receiver is connected to the LANTIME system internally by using a serial connection and additionally by using the second pulse. There are therefore 2 references used by NTPD, the receiver (GPS, PZF,...) and PPS time source. You will find the two time sources in the status information of the NTPD. After the NTP is synchronised, the display shows "NTP: Offset GPS [PZF,MSF,WWV,TCR]: x" or "NTP: Offset PPS: x" where "x" is the actual offset to the receiver or PPS time source.

This page will be reloaded every 30 seconds in order to reflect the current status of the unit. Please bear this in mind when you try to login and enter your password. If you do not press ENTER or the Login button within 30 seconds, the user and password field is cleared and you have to start over again.

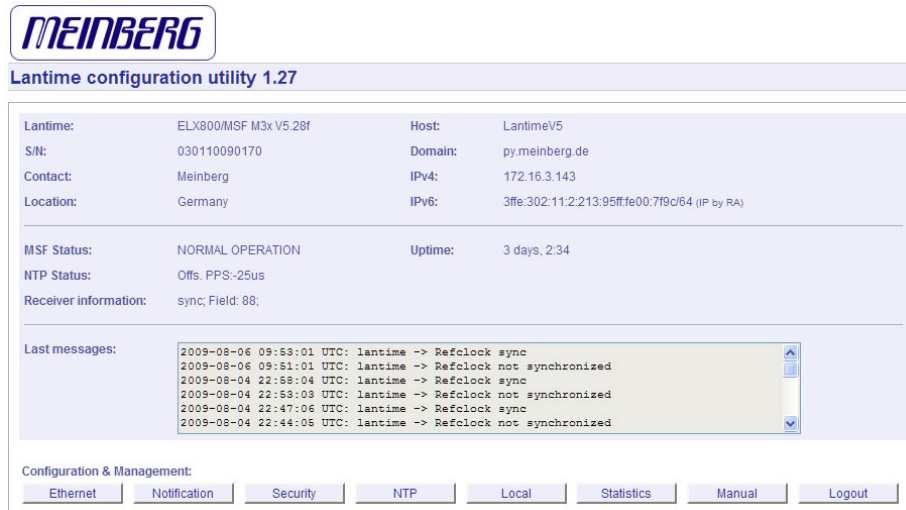
Login first installation:

Default User: *root*

Default Password: *timeserver*

12.1 Configuration: Main Menu

After entering the right password, the main menu page shows up. This page contains an overview of the most important configuration and status parameters for the system.



The start page gives a short overview of the most important configuration parameters and the runtime statistics of the unit. In the upper left corner you can read which LANTIME model and which version of the LANTIME software you are using. This LANTIME software version is a head version number describing the base system and important subsystems. Below the version you will find the actual hostname and domain of your LANTIME unit, the IPv4 and IPv6 network address of the first network interface and on the right side the serial number, the uptime of the system (time since last boot) and the notification status.

In the second section the actual status of the GPS reference clock and the NTP subsystem is shown, additional information about the GPS receiver are also found here. This includes the number of satellites in view and the number of good satellites in view.

The third section shows the last messages of the system, with a timestamp added. The newest messages are on top of the list. This is the content of the file `/var/log/messages`, which is created after every start of the system (and is lost after a power off or reboot).

By using the buttons in the lower part of the screen, you can reach a number of configuration pages, which are described below.

12.2 Configuration: Ethernet

Ethernet configuration

Main network information:

Hostname:

Domainname:

Nameserver 1:

Nameserver 2:

Syslogserver 1:

Syslogserver 2:

Default Gateways:

IPv4 Gateway:

IPv6 Gateway:

Available network services:

	Telnet	FTP	SSH	HTTP	HTTPS	SNMP	NETBIOS	TIME
Active:	<input checked="" type="checkbox"/>	<input checked="" type="checkbox"/>	<input checked="" type="checkbox"/>	<input checked="" type="checkbox"/>	<input checked="" type="checkbox"/>	<input type="checkbox"/>	<input type="checkbox"/>	<input checked="" type="checkbox"/>

Available internet protocols:

	IPv4	IPv6
Active:	<input checked="" type="checkbox"/>	<input checked="" type="checkbox"/>

Available network interfaces: 2

Interface 0:

TCP/IP address:

Netmask:

DHCP-Client: ☒

Net link mode:

High availability bonding:

IP from DHCP:

Gateway from DHCP:

Netmask from DHCP:

Indicate Link on Front Panel LED: ☒

IPv6 1:

IPv6 2:

IPv6 3:

Autoconf: ☒

IP by Router Advertisement:

Link local:

Additional network configuration:

In the network configuration all parameters related to the network interfaces can be changed. In the first section you can change the hostname and domain name. You can also specify two nameserver and two SYSLOG server. In the nameserver and syslog server fields you may enter an IPv4 or IPv6 address (the syslog servers can be specified as a hostname, too).

12.2.1 SYSLOG Server

All information written to the LANTIME SYSLOG (/var/log/messages) can be forwarded to one or two remote SYSLOG servers. The SYSLOG daemon of this remote SYSLOG needs to be configured to allow remote systems to create entries. A Linux SYSLOGD can be told to do so by using the command "syslogd -r" when starting the daemon.

If you enter nothing in the SYSLOG server fields or specify 0.0.0.0 as the SYSLOG servers addresses, the remote SYSLOG service is not used on your LANTIME.

Please be aware of the fact that all SYSLOG entries of the timeserver are stored in /var/log/messages and will be deleted when you power off or reboot the timeserver. A daily CRON job is checking for the size of the LANTIME SYSLOG and deletes it automatically, if the log size is exceeding a certain limit.

By specifying one or two remote SYSLOG servers, you can preserve the SYSLOG information even when you need to reboot or switch off the LANTIME.

In the second section the possible network protocols and access methods can be configured. You can enable/disable TELNET, FTP, SSH, HTTP, HTTPS, SNMP and NETBIOS by checking/unchecking the appropriate check boxes. After you saved your settings with the "Save" button, all these subsystems are stopped and eventually restarted (only if they are enabled, of course).

The third section allows you to select the IP protocol version 6. In this version the IPv4 protocol is mandatory and cannot be disabled, but as a workaround a standalone IPv6 mode can be achieved by entering an IPv4 address "0.0.0.0" and disabling the DHCP client option for every network interface of your LANTIME. By doing so, you ensure that the timeserver cannot be reached with IPv4. Please note that TELNET, FTP and NETBIOS cannot be used over IPv6 in this version. It is no problem to use IPv4 and IPv6 in a mixed mode environment on your LANTIME.

12.3 Network interface specific configuration

The interface specific parameters can be found in the Interface section. If your LANTIME is equipped with only one network interface, you will find only one sub section (Interface 0). Otherwise you see a sub section for each installed Ethernet port.

Here, the parameters for the network port can be changed. In the upper section of the page you can enter the IPv4 parameters, the lower part gives you access to the IPv6 parameters of the interface.

12.3.1 IPv4 addresses and DHCP

IPv4 addresses are built of 32 bits, which are grouped in four octets, each containing 8 bits. You can specify an IP address in this mask by entering four decimal numbers, separated by a point ".".

Example: 192.168.10.2

Additionally you can specify the IPv4 netmask and your default gateway address. Please contact your network administrator, who can provide you with the settings suitable for your specific network.

If there is a DHCP (Dynamic Host Configuration Protocol) server available in your network, the LANTIME system can obtain its IPv4 settings automatically from this server. If you want to use this feature (again, you should ask your network administrator whether this is applicable in your network), you can change the DHCP Client parameter to "ENABLED". In order to activate the DHCP client functionality, you can also enter the IP address "000.000.000.000" in the LCD menu by using the front panel buttons of the LANTIME. Using DHCP is the default factory setting.

The MAC address of your timeserver can be read in the LCD menu by pressing the NEXT button on the front panel twice. This value is often needed by the network administrator when setting up the DHCP parameters for your LANTIME at the DHCP server.

If the DHCP client has been activated, the automatically obtained parameters are shown in the appropriate fields (IPv4 address, netmask, gateway).

12.3.2 IPv6 addresses and autoconf

You can specify up to three IPv6 addresses for your LANTIME timeserver. Additionally you can switch off the IPv6 autoconf feature. IPv6 addresses are 128 bits in length and written as a chain of 16bit numbers in hexadecimal notation, separated with colons. A sequence of zeros can be substituted with "::" once.

Examples:

"::" is the address, which simply consists of zeros
"::1" is the address, which only consists of zeros and a 1
as the last bit. This is the so-called host local address
of IPv6 and is the equivalent to 127.0.0.1 in the IPv4 world

"fe80::0211:22FF:FE33:4455" is a typical so-called link local
address, because it uses the "fe80" prefix.

In URLs the colon interferes with the port section, therefore
IPv6-IP-addresses are written in brackets in an URL.
("http://[1080::8:800:200C:417A]:80/" ;
the last ":80" simply sets the port to 80, the default http port)

If you enabled the IPv6 protocol, the LANTIME always gets a link local address in the format "fe80:: ...", which is based upon the MAC address of the interface. If a IPv6 router advertiser is available in your network and if you enabled the IPv6 autoconf feature, your LANTIME will be set up with up to three link global addresses automatically.

The last parameter in this sub section is "Netlink mode". This controls the port speed and duplex mode of the selected Ethernet port. Under normal circumstances, you should leave the default setting ("autosensing") untouched, until your network administrator tells you to change it.

12.3.3 High Availability Bonding

The standard moniker for this technology is IEEE 802.3ad, although it is known by the common names of trunking, port trunking, teaming and link aggregation. The conventional use of bonding under Linux is an implementation of this link aggregation.

Only one link is used at any given time. At least two physical Ethernet ports must be linked to one bonding group to activate this feature. The first Ethernet Port in one bonding group provides the IP-Address and the net mask of this new virtual device. The implementation of the LANTIME Bonding feature will not replace the MAC address of the active ethernet port. Depending on the LINK state of the ETH-port the IP address of the first port in the bonding group will be set to the next ethernet port. All services will be restarted automatically.

12.3.4 Additional Network Configuration

You can configure additional network parameter like special network routes or alias definitions. For this you will edit a script file which will be activated every time after the network configuration will run.

Ethernet configuration

Content of /mnt/flash/config/netconf.cmd:

```
#!/bin/bash  
  
#Example how to setup an additional route  
#route add -net 172.16.6.0 netmask 255.255.255.0 eth0
```

Save file

Close

Also the Samba Configuration from “/etc/samba/smb.conf” can be edited:

Ethernet configuration

Content of /mnt/flash/config/samba/smb.cnf:

```
# smb.conf is the main samba configuration file.  
[global]  
    workgroup = MEINBERG  
    map to guest = Bad User  
    os level = 2  
    time server = Yes  
    unix extensions = Yes  
    encrypt passwords = Yes  
    log level = 1  
    syslog = 0  
    printing = CUPS
```

Save file

Close

12.4 Configuration: Notification

Notification management

Email information:

To address:

Other recipients

From address:

Smarthost:

Windows messenger information (WinPopup):

Mail address 1:

Mail address 2:

SNMP information:

SNMP manager 1:
Community:

SNMP manager 2:
Community:

SNMP manager 3:
Community:

SNMP manager 4:
Community:

VP100/NET display information:

Display 1:
Serial number:

Display 2:
Serial number:

User defined notification:

Show user defined notification script
Edit user defined notification script

NTP client monitoring:

Show client list
Edit client list

NTP client offset limit: 10 ms
Show client status

NTP client stratum limit: 10

Notification conditions:

Condition:	Triggers:					
	Email	Wmail	SNMP	VP100/NET	User	Relais
Normal Operation	<input type="checkbox"/>	<input type="checkbox"/>	<input type="checkbox"/>	<input type="checkbox"/>	<input type="checkbox"/>	<input checked="" type="checkbox"/>
NTP not sync	<input type="checkbox"/>	<input type="checkbox"/>	<input type="checkbox"/>	<input type="checkbox"/>	<input type="checkbox"/>	<input type="checkbox"/>
NTP stopped	<input type="checkbox"/>	<input type="checkbox"/>	<input type="checkbox"/>	<input type="checkbox"/>	<input type="checkbox"/>	<input type="checkbox"/>
Server boot	<input type="checkbox"/>	<input type="checkbox"/>	<input type="checkbox"/>	<input type="checkbox"/>	<input type="checkbox"/>	<input type="checkbox"/>
Receiver not responding	<input type="checkbox"/>	<input type="checkbox"/>	<input type="checkbox"/>	<input type="checkbox"/>	<input type="checkbox"/>	<input type="checkbox"/>
Receiver not sync	<input type="checkbox"/>	<input type="checkbox"/>	<input type="checkbox"/>	<input type="checkbox"/>	<input type="checkbox"/>	<input type="checkbox"/>
Receiver sync	<input type="checkbox"/>	<input type="checkbox"/>	<input type="checkbox"/>	<input type="checkbox"/>	<input type="checkbox"/>	<input type="checkbox"/>
Config changed	<input type="checkbox"/>	<input type="checkbox"/>	<input type="checkbox"/>	<input type="checkbox"/>	<input type="checkbox"/>	<input type="checkbox"/>
NTP client offset limit	<input type="checkbox"/>	<input type="checkbox"/>	<input type="checkbox"/>	<input type="checkbox"/>	<input type="checkbox"/>	<input type="checkbox"/>

Edit messages

Save settings
Reset changes
Back

12.4.1 Alarm Events

On this page you can set up different notification types for a number of events. This is an important feature because of the nature of a timeserver: running unobserved in the background. If an error or problem occurs, the timeserver is able to notify an administrator by using a number of different notification types.

The LANTIME timeserver offers different ways of informing the administrator or a responsible person about nine different events: EMAIL sends an e-mail message to a specified e-mail account, SNMP-TRAP sends a SNMP trap to one or two SNMP trap receivers, WINDOWS POPUP MESSAGE sends a winpopup message to one or two different computers. DISPLAY shows the alarm message on a wall mount display model VP100/NET, which is an optional accessory you can obtain for your LANTIME.

Attention: mbgLtTrapNormalOperation clears everything! It is a master trap to show that the LANTIME is running in full state!



Trapname	Cleared By
NTPStopped	NTPNotSync or NTP Sync
NTPNotSync	NTPSync
ReceiverNotResponding	ReceiverNotSync or ReceiverSync
ReceiverNotSync	ReceiverSync
AntennaFaulty	AntennaReconnect
SecondaryRecNotSync	SecondaryRecSync
PowerSupplyFailure	PowerSupplyUp
NetworkDown	NetworkUp
SecondaryRecNotResp	RecNotSync or RecSync

The following traps are notifications that do not have a "clearing" trap:

- mbgLtTrapConfigChanged
- mbgLtTrapLeapSecondAnnounced
- mbgLtTrapServerBoot

Every event can use a combination of those four notification types, of course you can disable notification for an event (by just disabling all notification types for this event). The configuration of the four notification types can be changed in the upper section of the page, you can control which notification is used for which event in the lower part of the page.

12.4.2 E-mail messages

You can specify the e-mail address which is used as the senders address of the notification e-mail (From: address), the e-mail address of the receiver (To: address) and a SMTP smarthost, that is a mail server forwarding your mail to the receiver's mail server. If your LANTIME system is connected to the internet, it can deliver those e-mails itself by directly connecting to the receivers mail server. Additional e-mail addresses can be specified via the CC-recipients button.

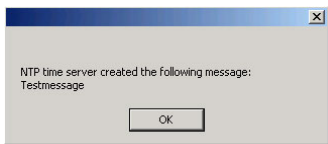
These settings cannot be altered with the LC display buttons of the front panel. Please note the following:

- The host name and domain name should be known to the SMTP smarthost
- A valid nameserver entry is needed
- The domain part of the "From:" address has to be valid

12.4.3 Windows Popup Messages

Most Microsoft Windows operating systems provide you with a local notification tool. You can send messages via the special Windows protocol in your local network. It is not necessary to enable the NETBIOS protocol of the LANTIME in order to use this notification. On the Windows client side it is necessary to activate the "Microsoft Client for Windows" in the network configuration.

You can enter the Windows computer name of up to two Windows PCs in the appropriate fields. Every message contains a time stamp and a plain text message:



12.4.4 SNMP-TRAP messages

Up to two SNMP trap receiver hosts can be configured in this subsection, you may use IPv4 or IPv6 addresses or specify a hostname. Additionally you have to enter a valid SNMP community string for your trap receiving community. These can be unrelated to the SNMP community strings used for status monitoring and configuration access (see SNMP configuration on the "Security" page).

12.4.5 VP100/NET wall mount display

The VP100/NET wall display is an optional accessory for the LANTIME timeserver, it has an own integrated Ethernet port (10/100 Mbit) and a SNTP client. The time for the display can be received from any NTP server using the SNTP protocol (like your LANTIME), additionally the display is capable of showing text messages, which are sent by using a special utility. The LANTIME can send an alarm message to one or two VP100/NET displays over the network, whenever an event occurs for which you selected the display notification type. If this happens, a scrolling alarm message is shown three times on the display.

Just enter the display's IP address and its serial number (this is used for authorisation), which can be found by pressing the SET button on the back of the display four times. The serial number consists of 8 characters, representing four bytes in hexadecimal notation.

If you want to use the display for other purposes, you can send text messages to it by using our command line tool send2display, which can be found on the LANTIME. This allows you to use the display by CRON jobs or your own shell scripts etc. If you run the tool without parameters, a short usage screen is shown, explaining all parameters it may understand. See appendix for a printout of this usage screen.

12.4.6 User defined Alarm scripts

You can define your own alarm script for every event by using the "Edit user defined notification script". This script will be called automatically if one of the selected events occurs.

This user alarm script will be stored on the Flash-Disk at `"/mnt/flash/user_defined_notification"`. This script will be called with index and the alarm message as text. The index value of the test message is 0.

12.4.7 NTP Client Monitoring

You can monitor a group of NTP clients and supervise the time offset, the NTP stratum value and if the client is reachable or not. With the button „edit client list“ you can edit the list of clients to monitor. You can add the TCP/IP address or the hostname of the client:

Notification management

Please insert up to 100 client address to monitor in a separate line

Content of /mnt/flash/config/clients_to_manage:

Save file

Close

You can monitor the current states of the configured clients:

12.4.8 Alarm messages

You can change the alarm message text for every event by using the "Edit Messages" button, the messages are stored in a file `/mnt/flash/notification_messages` on the flash disk of your timeserver.

Notification management

Notification conditions: please adjust the messages to fulfill your needs

Condition:	Adjusted condition:
Normal Operation	
NTP not sync	
NTP stopped	
Server boot	
Receiver not responding	
Receiver not sync	
Receiver sync	
Config changed	
NTP client offset limit	
Default messages	

Save settings

Reset changes

Back

12.5 Configuration: Security

Security management

Login:

[Config HTTP access control](#)

Front Panel:

Lock Front Panel: [Deactivated](#)

SSH key generation:

[Generate SSH key](#) [Show SSH key](#)

HTTPS certificate generation:

[Generate SSL certificate for HTTP](#) [Show SSL certificate for HTTP](#)

[Durchsuchen...](#)

[Upload HTTPS certificate](#) [Download HTTPS certificate](#)

NTP autokey generation:

[Generate new NTP public key](#) [Generate groupkey](#)

[Durchsuchen...](#)

[Upload groupkey](#)

NTP autokey password:

NTP symmetric keys:

[Show NTP MD5 keys](#) [Edit NTP MD5 keys](#)

SNMP:

Read community String:

Read/Write community string:

SNMP contact:

SNMP location:
[Please edit these values on the local page](#)

User name:

Authentication passphrase:

Re-enter passphrase: [Change SNMP v3 authentication](#)

[Save settings](#) [Reset changes](#) [Back](#)

12.5.1 Password

On the “Security” page you can manage all security relevant parameters for your timeserver. In the first section “Login” the administration password can be changed, which is used for SSH, TELNET, FTP, HTTP and HTTPS access. The password is stored encrypted on the internal flash disk and can only be reset to the default value “timeserver” by a “factory reset”, changing all settings back to the factory defaults. Please refer to the LCD configuration section in this manual.

12.5.2 HTTP Access Control

With this function you can restrict the access to the web interface and allow only a few hosts to login. Only the hosts you entered in the list are able to login to the HTTP/HTTPS server of your LANTIME.

If a non-allowed host tries to login, the following message appears:

12.5.3 SSH Secure Shell Login

The SSH provides you with a secure shell access to your timeserver. The connection is encrypted, so no readable passwords are transmitted over your network. The actual LANTIME version supports SSH1 and SSH2 over IPv4 and IPv6. In order to use this feature, you have to enable the SSHD subsystem and a security key has to be generated on the timeserver by using the “Generate SSH key” button. Afterwards, a SSH client can connect to the timeserver and opens a secure shell:

ssh root @ 192.168.16.111

The first time you connect to a SSH server with an unknown certificate, you have to accept the certificate, afterwards you are prompted for your password (which is configured in the first section of this page).

Default Password: **timeserver**

If you generate a new SSH key, you can copy and paste it into your SSH client configuration afterwards in

order to allow you to login without being prompted for a password. We strongly recommend to use SSH for shell access, TELNET is a very insecure protocol (transmitting passwords in plain text over your network).

If you enabled SSH, your LANTIME automatically is able to use secure file transfer with SCP or SFTP protocol. The usage of FTP as a file transfer protocol is as insecure as using TELNET for shell access.

Security management

Content of /tmp/ssh_key_output:

```
SSH V1 Host Key:
2048 35
2046797880213292523725036095625287622861135303504214341498207888544842325389250575506090209169422266
root@LantimeV5
-----
SSH V2 Host RSA Key:
ssh-rsa
AAAAB3NzaC1yc2EAAAABIwAAAQEAzcXUTSvEQeWQ8qaGJLuj2E6+eDvzIV4cqzrufTC1JKexia3W6komT6gKt3kbG4yNf0Ni8R117
```

Close

12.5.4 Generate SSL Certificate for HTTPS

HTTPS is the standard for encrypted transmission of data between web browser and web server. It relies on X.509 certificates and asymmetric crypto procedures. The timeserver uses these certificates to authenticate itself to the client (web browser). The first time a web browser connects to the HTTPS web server of your LANTIME, you are asked to accept the certificate of the web server. To make sure that you are talking to your known timeserver, check the certificate and accept it, if it matches the one stored on the LANTIME. All further connections are comparing the certificate with this one, which is saved in your web browser configuration. Afterwards you are prompted to verify the certificate only when it changed.

By using the button "Generate SSL certificate for HTTP" you can create a new certificate. Please enter your organisation, name, mail address and the location in the upcoming form and press "Generate SSL certificate" to finally generate it.

Generate HTTPS certificate

Please fill out the following fields:

Country Name(*): (2 letter code)

Locality Name(*):

Organization Name(*):

Organizational Unit:

Common Name(*):

Email Address(*):

☐ Generate Diffie-Hellman parameter

Fields marked with * are mandatory

After the successful generation of the certificate, it is shown to you:

Security management

Content of /www/ssl/https:

```
-----BEGIN RSA PRIVATE KEY-----
MIICWwIBAAKBgQC8K2KDSk88DvYv94HyISK2bcS1d3hEafZheGPheTCq8BhgQRh
dvd3qEJlvyE3eXk47ic9EaEksRrRROIRNqHvRUu2T1w1ZuWQb1VohrLH+Vyd
jNzEO+eVQeSL2A117G6B8ZuP8og391XwM7aDMu+5WbZINQPrHy/Je+VbbswIDAQAB
AoGAMTevf620vBRaAdvzP8e488XNj+3eBisZWFU/6e160z1V18RTOOKObw86
DCJc06Cc4M1sB+A0jzLp+DIHsTpH27w1z218zrt0XNEJNqaeLMcOh/86a5YiBY3/
OKCbdVGLSCGU0zNqF/OfoavAB81IwYJDIreChFYXjYp9kCQqDtcK2kgLSZ1Ly
kgHact4g1nA4g55klyFXXQDgQQs34h/epJOEoXNpICITYSvMcWnNp/Sh18TDkvf
epJQKRnVAkEAYrcfOcuP8JUtbnS06C30Hlg9IC/mZh448dJ0JecRu38wGZeuZndM
G6YbK4a3FAd9d62QbWf8ma3UL8Tvb72u3A8apHvrv15Jec0jKQKandDrTJ9CC8G
MkcK3PXbX11FaHnyGL12P187nR28uBuXzCNvupNZAag1I+X1JPaXzSN3QJAZkC6
-----
```

It is also possible to upload your own HTTPS certification. If you upload a non valid certification HTTPS will not work.

12.5.5 NTP keys and certificates

The fourth and fifth section of the “Security” page allow you to create the needed crypto keys and certificates for secure NTP operation (please see NTP authentication below).

The function “Generate new NTP public key” is creating a new self-signed certificate for the timeserver, which is automatically marked as “trusted”.

Important note: This certificate is depending on the hostname of your LANTIME, it is mandatory to re-create the certificate after changing the hostname. The certificates are build with the internal command “ntp-keygen -T” (ntp-keygen is part of the installed NTP suite). Your LANTIME is using the /etc/ntp/ directory for storing its private and public keys (this is called the “keysdir”). Please refer to the chapter “NTP Autokey” for further information (below).

The two options “Show NTP MD5 key” and “Edit NTP MD5 keys” allow you to manage the symmetric keys used by NTP. More about that can be found in the chapter about symmetric keys (below).



12.5.6 SNMP Parameter

In the last Section all parameters for SNMP can be configured. More information you can find later in this manual.

12.6 Configuration: NTP

NTP management

NTP configuration:

External NTP server address 1:

Key:

☐ use autokey

External NTP server address 2:

Key:

☐ use autokey

External NTP server address 3:

Key:

☐ use autokey

External NTP server address 4:

Key:

☐ use autokey

External NTP server address 5:

Key:

☐ use autokey

External NTP server address 6:

Key:

☐ use autokey

External NTP server address 7:

Key:

☐ use autokey

Stratum of local clock

12

☐ disable local clock

Local trusted key:

NTP broadcast address:

0

Key:

☐ use autokey

Broadcast interval:

—

seconds

NTP trusttime:

0

Days

0=Standard receiver trust time used (4 days)

	Autokey	PPS
Active:	<input type="checkbox"/>	<input checked="" type="checkbox"/>

Edit additional NTP parameter

Show current NTP configuration

Config NTP access control

Save settings

Reset changes

Back

The NTP configuration page is used to set up the additional NTP parameters needed for a more specific configuration of the NTP subsystem.

The default configuration of the timeserver consists of a local clock, which represents the hardware clock of your LANTIME system and the GPS reference clock. The local clock is only chosen as the NTP time reference after the GPS clock lost its synchronisation. The stratum level of this local clock is set to 12, this ensures that clients recognise the switchover to the local clock and are able to eventually take further actions. The local clock can be disabled if the timeserver should not answer any more when the reference clock is out of order.

Because the reference clock is internally connected to the LANTIME system by using a serial connection, the accuracy using this way of synchronisation is around 1 ms. The high accuracy of the LANTIME timeserver (around 10 microseconds) is available by using the ATOM driver of the NTP subsystem, which is directly interpreting the PPS (pulse per second) of the GPS reference clock. The default configuration looks like this:

```
# *** lantime ***
# NTP.CONF for GPS167 with UNI ERLANGEN

server 127.127.1.0          # local clock
fudge 127.127.1.0 stratum 12 # local stratum

server 127.127.8.0 mode 135 prefer # GPS167 UNI Erlangen PPS
fudge 127.127.8.0 time1 0.0042    # relative to PPS
server 127.127.22.0          # ATOM (PPS)
fudge 127.127.22.0 flag3 1      # enable PPS API
enable stats
```

```
statsdir /var/log/
statistics loopstats
driftfile /etc/ntp.drift

# Edit /mnt/flash/ntpconf.add to add additional NTP parameters
```

By using the NTP configuration page, a number of additional parameters can be added to this default ntp.conf. In the upper section up to five external NTP servers can be set up to provide a high grade of redundancy for the internal reference clock. For each of these external NTP servers the AUTOKEY or symmetric key feature of NTP can be used to ensure the authentic of these time sources. The “Prefer” flag can be set for each external server. The internal refclock has set this flag by default. The “Prefer” flag is usefull if one of the refclocks are not available or out of sync.

The field “Stratum of local clock” is used to change the stratum level of the local clock (see above), default is 12.

The “Local trusted key” field holds a list of all trusted symmetric keys (comma or space separated), which have to be accepted by the NTPD of your LANTIME.

If you want to use your LANTIME timeserver to send NTP broadcast packets to your network, you have to enter a valid broadcast address in “NTP broadcast address”. If you want to use IPv6 multicast mode, you have to enter a valid IPv6 multicast address in this field. Please note that NTP Version 4, which is used by the LANTIME timeserver, only permits authenticated broadcast mode. Therefore you have to set up the AUTOKEY feature or a symmetric key if you use a NTPv4 client and want to broadcast / multicast your time. A sample configuration of the NTP client for broadcast with symmetric keys looks like:

```
broadcastclient yes
broadcastdelay 0.05      # depends on your network
keys /etc/ntp/keys
trustedkey 6 15
requestkey 15
controlkey 15
```

In the next section you can enable the AUTOKEY feature for your LANTIME timeserver and the PPS mode (which is enabled in default settings), see above for a description.

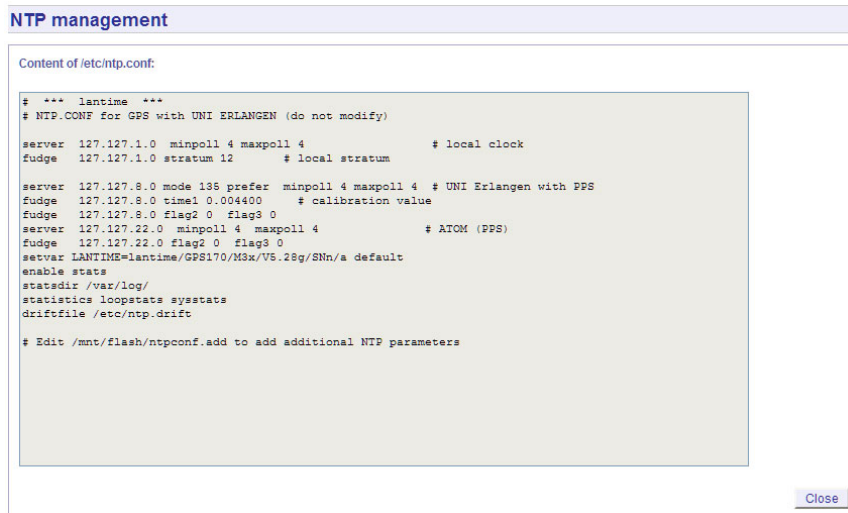
The NTP Trusttime will specify the time how long the NTP will trust the reference time if this is not synchronized (free running). This time will be set in seconds or minutes or hours. The value 0 will be select the default value for the specific reference clock. The default values are:

```
LANTIME/GPS:      96 h
LANTIME/PZF:      0,5 h
LANTIME/RDT:      0,5 h
LANTIME/NDT:      96 h
```

After each restart and after any change of configuration a new /etc/ntp.conf file is generated by the LANTIME software. Any changes you made to this file are lost. In order to use your custom ntp.conf (your LANTIME is using a standard version of the NTP software suite, therefore all configuration parameters of the NTP software are fully supported), you have to edit the file /mnt/flash/ntpconf.add, which is automatically appended to the /etc/ntp.conf file generated at boot time or when reloading configuration after a change. You can edit this file by using the button “Edit additional NTP parameter”.



By choosing “Show current NTP configuration”, you can review the actual state of the `/etc/ntp.conf` file. The file cannot be changed on this page, see above for a description why editing this file is not reasonable.



12.6.1 NTP Authentication

NTP version 2 and version 3 support an authentication method using symmetric keys. If a packet is sent by the NTPD while using this authentication mode, every packet is provided with a 32 bit key ID and a cryptographic 64/128 bit checksum of the packet. This checksum is built with MD5 or DES, both algorithms offer a sufficient protection against manipulation of data.

Please note that the distribution of DES in the United States of America and Canada is subject to restrictions, while MD5 is not affected by that. With any of these algorithms the receiving NTP clients validate the checksum. Both parties (server and client) need to have the same crypto key with the same key ID.

In the authentication mode a party is marked “untrusted” and not suitable for synchronisation, whenever unauthorised packets or authorised packets with a wrong key are used. Please note that a server may recognise a lot of keys but uses only a few of them. This allows a timeserver to serve a client, who is demanding an authenticated time information, without “trusting” the client.

Some additional parameters are used to specify the key IDs used for validating the authentic of each partner. The configuration file `/etc/ntp.conf` of a server using this authentication mode may look like this:

```
# peer configuration for 128.100.100.7
# (expected to operate at stratum 2)
# fully authenticated this time

peer 128.100.49.105 key 22 # suzuki.ccie.utoronto.ca
peer 128.8.10.1 key 4      # umd1.umd.edu
peer 192.35.82.50 key 6    # lilben.tn.cornell.edu

keys /mnt/flash/ntp.keys  # path for key file
trustedkey 1 2 14 15      # define trusted keys
requestkey 15             # key (mode 6) for accessing server variables
```

```
controlkey 15          # key (mode 7) for accessing server variables
```

The “keys” parameter indicates the location of the file, in which all symmetric keys are stored. The “trustedkey” line identifies all key IDs, which have to be considered “trusted” or “uncompromised”. All other keys defined in the keyfile are considered “compromised”. This allows to re-use already owned keys by just adding their respective key ID to the “trustedkey” parameter. If a key needs to be “switched off”, it can be removed from this line without actually removing it from the system. This ensures an easy way to re-activate it later without actually transferring the key again.

The line “requestkey 15” declares the key ID for mode-6 control messages (as described in RFC-1305), which are used by the ntpq utility for example. The “controlkey” parameter is specifying the key used for mode-7 private control messages, for example used by the ntpdc utility. These keys protect the ntpd variables against unauthorised modification.

The ntp.keys file mentioned above holds a list of all keys and their respective ID known by the server. This file should not be world-readable (only root should be able to look into this) and it may look like this:

```
# ntp keys file (ntp.keys)
```

```
1      N 29233E0461ECD6AE    # des key in NTP format
2      M RIrop8KPPvQvYotM    # md5 key as an ASCII random string
14     M sundial              # md5 key as an ASCII string
15     A sundial              # des key as an ASCII string
                                # the following 3 keys are identical
10     A SeCReT
10     N d3e54352e5548080
10     S a7cb86a4cba80101
```

The first column holds the key ID (used in the ntp.conf file), the second column defines the format of the key, which is following in column three. There are four different key formats:

- “**A**” means DES key with up to eight 7-bit ASCII characters, where each character is standing for a key octet (this is used by Unix passwords, too).
- “**S**” is a DES key written in hexadecimal notation, where the lowest bit (LSB) of each octet is used as the odd parity bit.
- If the key format is specified as “**N**”, it also consists of a hexadecimal string, but in NTP standard format by using the highest bit (HSB) of each octet used as the odd parity bit.
- A key defined as “**M**” is a MD5 key with up to 31 ASCII characters.
- The LANTIME supports MD5 authentication only.
- Please be aware of the following restrictions: No “**#**”, “**t**” (**tab**), “**n**” (**newline**) and “**0**” (**null**) are allowed in a DES or MD5 ASCII key. The key ID 0 is reserved for special purposes and should not appear in the keys file.

12.6.2 NTP AUTOKEY

NTP Version 4 supports symmetric keys and additionally provides the so-called AUTOKEY feature. The authentic of received time at the NTP clients is sufficiently ensured by the symmetric key technique. In order to achieve a higher security, e.g. against so-called replay attacks, it is important to change the used crypto keys from time to time.

In networks with a lot of clients, this can lead to a logistic problem, because the server key has to be changed on every single client. To help the administrator to reduce this work (or even eliminate it completely), the NTP developers invented the AUTOKEY feature, which works with a combination of group keys and public keys. All NTP clients are able to verify the authentic of the time they received from the NTP servers of their own AUTOKEY group by using this AUTOKEY technique.

The AUTOKEY features works by creating so-called secure groups, in which NTP servers and clients are combined. There are three different kinds of members in such a group:

a) Trusted Host

One or more trusted NTP servers. In order to become a “trusted” server, a NTP server must own a self-signed certificate marked as “trusted”. It is good practice to operate the trusted hosts of a secure group at the lowest stratum level (of this group).

b) Host

One or more NTP servers, which do not own a “trusted” certificate, but only a self-signed certificate without this “trusted” mark.

c) Client

One or more NTP client systems, which in contrast to the above mentioned servers do not provide accurate time to other systems in the secure group. They only receive time.

All members of this group (trusted hosts, hosts and clients) have to have the same group key. This group key is generated by a so-called trusted authority (TA) and has to be deployed manually to all members of the group by secure means (e.g. with the UNIX SCP command). The role of a TA can be fulfilled by one of the trusted hosts of the group, but an external TA can be used, too.

The used public keys can be periodically re-created (there are menu functions for this available in the web interface and also in the CLI setup program, see “Generate new NTP public key” in section “NTP Autokey” of the “Security Management” page) and then distributed automatically to all members of the secure group. The group key remains unchanged, therefore the manual update process for crypto keys for the secure group is eliminated. A LANTIME can be a trusted authority / trusted host combination and also a “non-trusted” host in such a secure group.

To configure the LANTIME as a TA / trusted host, enable the AUTOKEY feature and initialise the group key via the HTTPS web interface (“Generate groupkey”) or CLI setup program. In order to create such a group key, a crypto password has to be used in order to encrypt / decrypt the certificate. This crypto password is shared between all group members and can be entered in the web interface and CLI setup program, too. After generating the group key, you have to distribute it to all members of your secure group (and setup these systems to use AUTOKEY, too). In the ntp.conf file of all group members you have to add the following lines (or change them, if they are already included):

```
crypto pw cryptosecret
keysdir /etc/ntp/
```

In the above example “cryptosecret” is the crypto password, that has been used to create the group key and the public key. Please note that the crypto password is included as a plain text password in the ntp.conf, therefore this file should not be world-readable (only root should have read access to it).

On the clients, the server entries must be altered to enable the AUTOKEY feature for the connections to the NTP servers of the group. This looks like:

```
server time.meinberg.de autokey version 4
server time2.meinberg.de
```

You find the server time.meinberg.de which is using the AUTOKEY feature, while time2.meinberg.de is used without any authentic checks.

If you want to setup the LANTIME server as a trusted host, but need to use a different trusted authority, please create your own group key with this TA and include it with the web interface of your LANTIME (on page “Security Management” see section “NTP autokey” , function “Upload groupkey”).

If you want to setup the LANTIME as a “non-trusted” NTP server, you have to upload the group key of your secure group (“Security Management” / “NTP autokey” / “Upload groupkey”) and create your own, self-signed certificate (without marking it as “trusted”). Because every certificate which is creating by using the web interface and/or CLI setup is marked “trusted”, you have to execute the tool “ntp-keygen” manually on your LANTIME by

using shell access (via SSH).

```
LantimeGpsV4:/etc/ntp # ntp-keygen -q cryptosecret
```

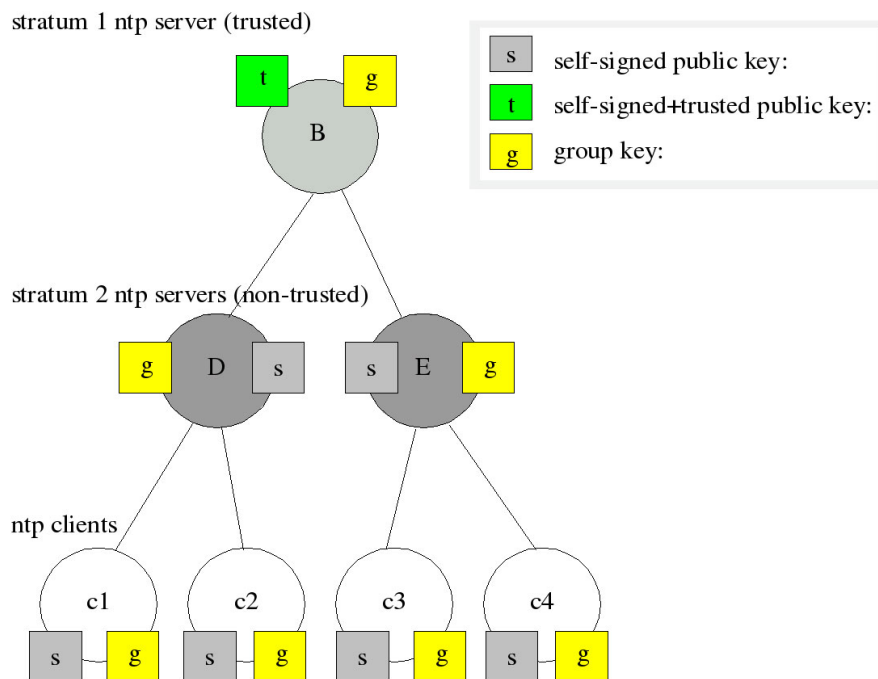
Here, too, “cryptosecret” is the crypto password used in the ntp.conf entry. Then you have to copy the new ntpkeys to the flash disk with:

```
cp /etc/ntp/ntpkey_* /mnt/flash/config/ntp/uploaded_groupkeys
```

A detailed description about ntp-keygen can be found on the NTP website (<http://www.ntp.org>).

Example:

This autokey group is formed by one Stratum-1-server (B), two Stratum-2-servers (D and E) and a number of clients (in the diagram there are 4 clients shown, c1 – c4). B is the trusted host, he holds the group key and a self-signed certificate marked as “trusted”.



D and E are NTP servers, which are “non-trusted” hosts of the group, they hold the group key and a self-signed certificate which lacks the “trusted” mark. The clients also hold the group key and a self-signed certificate. In order to distribute new public keys to the whole group, the administrator only has to generate a new “t” key, which will be distributed automatically to the two hosts D and E. Because these two servers can now present a unbroken chain of certificates to a trusted host, they can be considered “trusted” by the clients as well.

More about the technical background and detailed processes of the AUTOKEY technique can be found at the official NTP website (<http://www.ntp.org>).

12.7 Configuration: Local

Local configuration

Lantime services:

Reboot device

Manual configuration

Send test notification

Save NTP drift file

Reset to factory defaults

Download SNMP MIB files

Reset Error Relais

Lantime User Management:

User administration

Show Lantime information:

List all messages

List detailed version information

List device options

Lantime firmware update:

Durchsuchen...

Start firmware update

View logfile of last update

Lantime configuration:

Check configuration

Get diagnostics information

Receiver:

List detailed GPS information

General Information:

Contact:

Meinberg

Location:

Germany

Web interface language:

English

Save settings

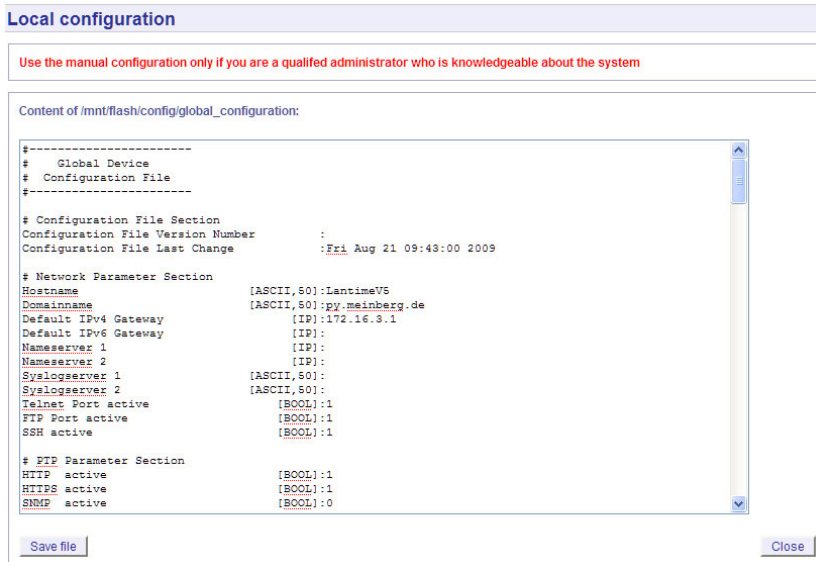
Reset changes

Back

12.7.1 Administrative functions

In the first section there are several functions which may be used by the administrator. The button “Reboot LAN-TIME” is restarting the system, the built-in reference clock is not affected by this, only the included computer system is rebooted, which may take up to 30 seconds.

With “Manual configuration” you are able to change the main configuration by editing the configuration file by hand. After editing, press the “Save file” button to preserve your changes, afterwards you are asked if your changes should be activated by reloading the configuration (this results in reloading several subsystems like NTPD, HTTPD etc.).



The function “Send test notification” is generating a test alarm message and sends it using all configured notify possibilities (e-mail, WMail, SNMP-Traps, wall mount display).

You can use the function “Save NTP drift file” to copy the file `/etc/ntp.drift` to the internal flash disc of your LANTIME. NTP is using this file to have the parameters for compensation of the incorrectness of the system clock available directly after a restart. This results in a faster synchronisation process of the NTPD subsystem after a system restart. You should use this function only, if the NTPD has been synchronized to the internal reference clock for more than one day. This is done here at Meinberg directly before shipping the LANTIME unit to our customers, so you do not need to use this function during normal operation. It may be applicable after a software update.

The function “Reset to factory defaults” is setting all configuration parameters back to default values. The regular file `/mnt/flash/global_configuration` will be replaced with the file `/mnt/flash/factory.conf`, but first a copy of the configuration is saved under `/mnt/flash/global_configuration.old` for backup reasons. The default password “timeserver” is replacing the actual password, too. After using this function, all certificates should be recreated because of the change of the unit’s hostname.

Please be aware of the fact that the default configuration is not activated instantly. If you want to avoid setting up the IP address of your unit by locally configuring it on site with the buttons of the front panel (meaning physical presence of someone directly at the location of the LANTIME), you have to configure the network parameters of your LANTIME immediately after using the “reset to factory defaults” button. So, please proceed directly to the Ethernet page and check/change the IP address and the possible access subsystems (HTTP for example) of the LANTIME. The first usage of “Save settings” will load the configuration from flash into memory and activate it.

The point “Download SNMP MIB files” can be used to download all Meinberg specific SNMP MIB files to your workstation. They can be distributed to all SNMP management clients afterwards.

12.7.2 User Management

For administration different users can be set up. 3 group memberships can be assigned to each user: the Super-User has all properties for administration. The group membership Administrator can change all parameters via

the command line interface (CLI) configuration tool and the WEB interface. The group Administrator cannot use any Linux command in a Telnet, SSH or Terminal session. If the Administrator will login, the setup program will be started directly. After termination of the Setup program this user will be logout automatically. The group membership "Info" has the same properties like the Administrator but cannot change any parameter.

Local configuration

Change Current User Password:

New password:

Re-enter:

User Management:

Add new User:

Password:

Group membership: ☐ Super-User
☐ Administrator
☐ Info

Available User:

Username	Group membership	Option
root	Super-User	

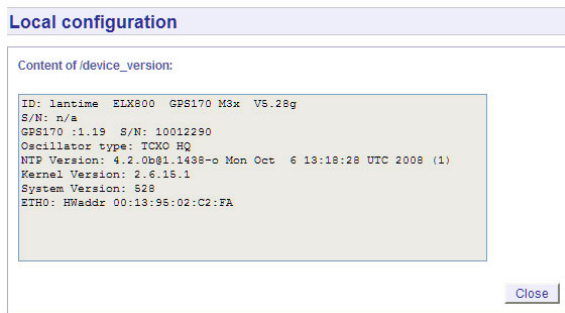
The menu "User Management" allows you to set up different users with a password and the group membership. To change the properties of an user you have to delete the old user and set up a new one. The user "root" cannot be deleted and has always the membership of Super-User. The password of the user "root" can be set on the security page.

12.7.3 Administrative Information

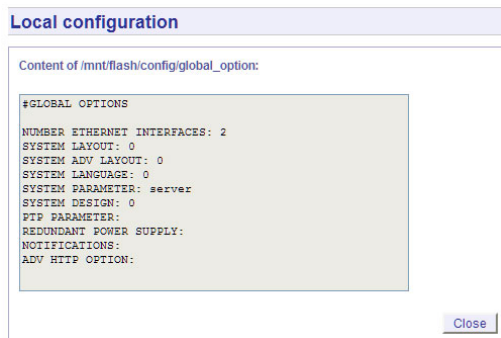
The button "List all messages" displays the SYSLOG of the LANTIME completely. In this log all subsystems create their entries, even the OS (upper case) kernel. The SYSLOG file /var/log/messages is only stored in the system's ram disk, therefore it is lost after a power off or restart. If you configured an external SYSLOG server, all LANTIME syslog entries will be duplicated on this remote system and can be saved permanently this way.

```
Mar 15 13:35:17 LanGpsV4 ntpd[12948]: ntpd 4.2.0@1.1161-r Fri Mar 5 15:58:48 CET 2004 (3)
Mar 15 13:35:17 LanGpsV4 ntpd[12948]: signal_no_reset: signal 13 had flags 4000000
Mar 15 13:35:17 LanGpsV4 ntpd[12948]: precision = 3.000 usec
Mar 15 13:35:17 LanGpsV4 ntpd[12948]: kernel time sync status 2040
Mar 15 13:35:17 LanGpsV4 ntpd[12948]: frequency initialized 45.212 PPM from /etc/ntp.drift
Mar 15 13:38:36 LanGpsV4 lantime[417]: NTP sync to GPS
Mar 15 13:38:36 LanGpsV4 lantime[417]: NTP restart
Mar 15 13:45:36 LanGpsV4 proftpd[14061]: connect from 172.16.3.2 (172.16.3.2)
Mar 15 14:01:11 LanGpsV4 login[15711]: invalid password for 'root' on 'tty1' from '172.16.3.45'
Mar 15 14:01:17 LanGpsV4 login[15711]: root login on 'tty1' from '172.16.3.45'
```

With "List detailed version information" a number of version numbers (including LANTIME software, operating system and NTPD) are shown in a textbox.

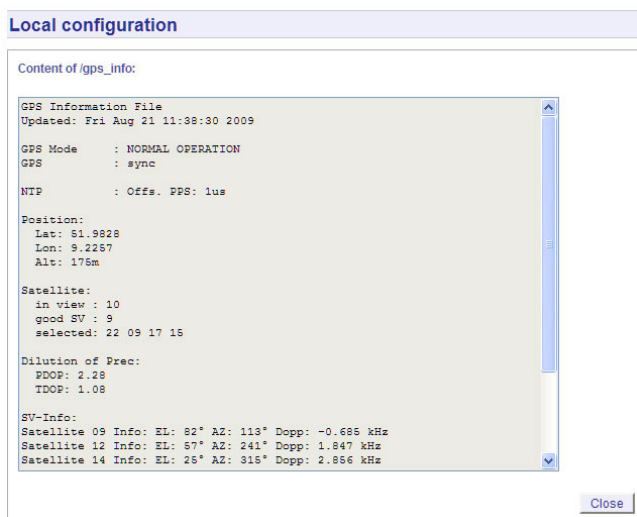


The function “List LANTIME Options” shows the hardware options installed in your LANTIME.



Using the button “List detailed GPS information” gives you the possibility to check detailed GPS status information. The first parameter indicates the time and date of the last update of the shown parameters. Next you find the GPS receiver status and the NTP status, followed by the GPS position data. The position uses the Latitude / Longitude / Altitude format. Latitude and Longitude are shown in degrees, minutes and seconds, Altitude is shown in meters above WGS84 ellipsoid.

The satellite section shows the numbers of satellites in view and the number of usable satellites (“good SV”). Additionally, the selected set of the four used satellites can be read.



The accuracy of the calculated receiver position and time deviation is dependent on the constellation of the four selected satellites. Using the position of the receiver and the satellites, a number of values can be calculated, which allow a rating of the selected constellation. These values are called “Dilutions of Precision (DOP)”. PDOP is the abbreviation for “Position Dilution of Precision”, TDOP means “Time Dilution of Precision” and GDOP stands for “General Dilution of Precision”. Lower values are indicating better accuracy.

The next section “Satellite Info” shows information about all the satellites, which are in view momentarily. The satellite ID, elevation, Azimuth and distance to the receiver reveal the position of the satellite in the sky. The Doppler shows whether the satellite is ascending (positive values) or descending (negative value).

12.7.4 Software Update

If you need to update the software of your LANTIME, you need a special file from Meinberg, which can be uploaded to the LANTIME by first choosing the file on your local computer with the "Browse" button and then press "Start firmware update".

The chosen file will be uploaded to the LANTIME, afterwards you are prompted to confirm the start of the update process. The scope of the update only depends on the chosen file.

12.7.5 Automatic configuration check

All parameters of the LANTIME can be checked for plausibility and all configured servers (e.g. SYSLOG servers, nameservers) are tested for reachability. All red coloured values should be reviewed by the administrator. Because all configured hostnames / IP addresses of the servers are processed during the reachabilitytests, the whole check process may take a while.

Local configuration

Checking the configuration

Ethernet:

Hostname: LantimeV5

ok

IPv4 Gateway: 172.16.3.1

ok

Ethernet interface 0:

TCP/IP address: 0.0.0.0

ok

Netmask: 255.255.255.000

ok

Ethernet interface 1:

TCP/IP address: 0.0.0.0

ok

Netmask: 255.255.255.000

ok

Notification:

To address: jens.bal@meinberg.de

ok

From address: jens.bal@meinberg.de

ok

Checking the reachability of configured ip-addresses or hostnames

Ethernet:

IPv4 Gateway: 172.16.3.1

reacha

Notification:

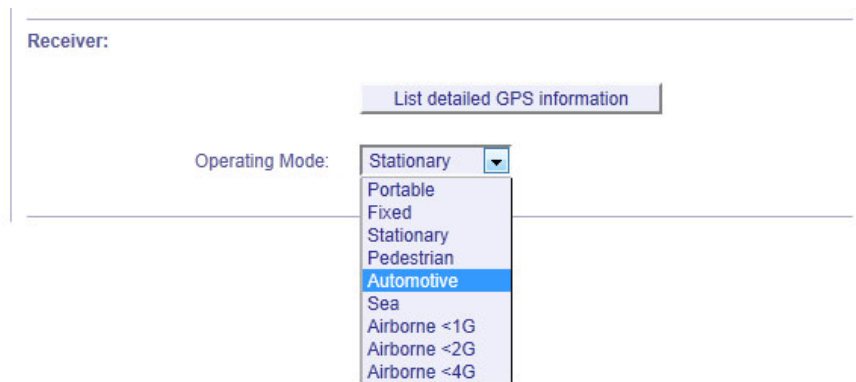
Back

12.7.6 Get Diagnostics Information

The diagnostics information is a set of configuration parameters and files stored in a packed text file. With the help of these informations the technical support from Meinberg can reproduce the current state of your LANTIME. It takes some time to collect all information from the LANTIME. Do not press the button again while this process is running - some web browsers will cancel the job if you press the button twice. After that you can download the packed file "config.zip" to your local computer. If you have any questions or problems with your LANTIME please send this file "config.zip" as an attachment of an e-mail to Meinberg support and describe your problem.

12.7.7 Receiver Information

Here you can indicate all important and relevant information about the used receiver / radio clock.



Receiver:

List detailed GPS information

Operating Mode:

- Stationary
- Portable
- Fixed
- Stationary
- Pedestrian
- Automotive
- Sea
- Airborne <1G
- Airborne <2G
- Airborne <4G

The example shows the menu with a GPS receiver and MGR module. With the button "List detailed GPS information" you can open a text field with all relevant receiver information. A LANTIME server with GPS receiver and MGR module can be adjusted to its operational mode (appropriate environment) - computing the position to the expecting speed.

12.7.8 Web interface language

With the selector box "Web interface language" you can change the displayed language of the WEB interface.



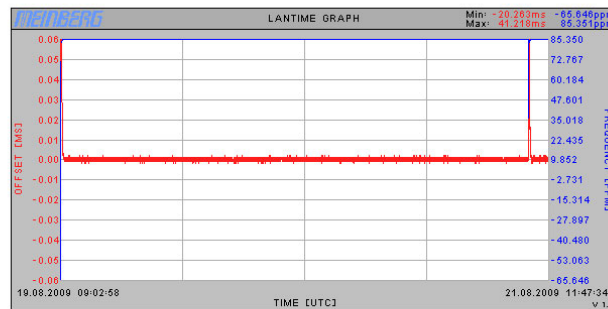
Web interface language:

- English
- English
- German

12.8 Configuration: Statistics

NTP Statistics

Statistical information:



Available logfiles:

☒ loopstats

☒ merge statistic files

Lantime information:

S/N: n/a
 GPS170 :1.19 S/N: 10012290
 Oscillator type: TCXO HQ
 NTP Version: 4.2.0b@1.1438-o Mon Oct 6 13:18:28 UTC 2008 (1)
 Kernel Version: 2.6.15.1
 System Version: 528
 ETH0: HWaddr 00:13:95:02:C2:FA
 Uptime: 50 h
 Mem free: 30920 kB
 Disk free: 48624 kb

Output of "ntpq -p":

remote	refid	st	t	when	poll	reach	delay	offset	jitter
LOCAL(0)	LOCL	12	I	2	16	377	0.000	0.000	0.002
+GENERIC(0)	.GPS.	0	I	5	16	377	0.000	0.000	0.002
oPPS(0)	.PPS.	0	I	12	16	377	0.000	0.000	0.002

Output of "ntpq -c 'cv assID' ":

```

assID=53410 status=0000 clk_okay, last_clk_okay,
device="Meinberg GPS16x receiver",
timecode="v0221.08.09; 5; 13:47:46; +02:00; S; 51.9828N 9.2258E 173mx03v00",
poll=215, noreply=0, badformat=0, baddata=0, fudgetime1=4.400,
stratum=0, refid=GPS, flags=0,
refclock_ppstime="ce3907e2.000000b4a Fri, Aug 21 2009 11:47:46.000",
refclock_time="ce3907e2.000000000 Fri, Aug 21 2009 11:47:46.000",
refclock_status="TIME CODE; PPS; POSITION; (LEAP INDICATION; PPS SIGNAL; POSITION)",
refclock_format="Meinberg GPS Extended",
refclock_states="NOMINAL: 00:58:27 (100.00%); running time: 00:58:27"
    
```

NTP access information:

remote address	port	local address	count	m	ver	code	avglen	last
127.0.0.1	2880	127.0.0.1	5769	7	2	0	0	0
172.16.3.116	123	172.16.3.153	55	3	4	0	64	1

Number of clients: 2

[Back](#)

[\[top \]](#)

12.8.1 Statistical Information

In the first section a graphical diagram shows the running synchronisation process. NTP is storing this statistical information in so-called “loopstats” files, which are used here to draw the curves. The red line is describing the offset between the internal reference clock (GPS) and the system clock. The blue line shows the frequency errors of the system time (in PPM, parts per million). In the upper right corner of the diagram you will find the measurement range of the red and blue curve. The last 24 hours are shown initially, but you are able to select the last 10 days (or fewer days, depending on the system uptime) or switch to a “merge loopstats” diagram, which shows all available days in one diagram (with a maximum of 10 days). All time data is using UTC.

The next sections shows version information for a number of subsystems, including the OS kernel version, NTPD version and the GPS firmware revision of the internal reference clock. Additionally, the MAC address of the first Ethernet interface can be found here. The “Mem free” value is indicating the free memory available to the system, the Disk free value is related to the ram disk of the LANTIME. Both system memory and ram disk have a total capacity of 32 MB (each). The Uptime parameter displays the time since the last boot process of the unit.

In the next section all NTP clients accessing the NTP server are listed. This list is maintained internally by NTPD, clients who did not access the NTPD for a longer period are automatically removed. This section can grow very long in large networks. There are no further information found about the parameters “code, avglen and first. The name resolution of the IP address in the first column will take too much time; so its disabled.

After that a list of all actually refclocks of the internal NTP server will be shown.

remote	refid	st	t	when	poll	reach	delay	offset	jitter
=====	=====	=====	=====	=====	=====	=====	=====	=====	=====
LOCAL(0)	LOCAL(0)	3	l	36	64	3	0.00	0.000	7885
lantime	.GPS.	0	l	36	64	1	0.00	60.1	15875

with the following meaning:

-
- remote: list of all valid time servers (ntp.conf)
 - refid: reference number
 - st: actual stratum value (hierarchy level)
 - when: last request (seconds)
 - poll: period of requesting the time server (seconds)
 - reach: octal notation of the successful requests, shifted left
 - delay: delay of the network transmission (milliseconds)
 - offset: difference between system time and reference time (milliseconds)
 - jitter: variance of the offsets (milliseconds)

The last section will show some NTP specific informations about the refclock.

12.9 Configuration: Manual

Manual

Available documents:

Filename	Language	Type	Date	Size	Option
1he_langps_etx_v5_e	english	pdf	2009-02-27	1647.40kb	open
1he_langps_etx_v5	german	pdf	2009-02-27	1745.07kb	open

2 documents available

You need Adobe's Acrobat Reader to open most of the documents [open](#)

Customer notes:

Filename	Language	Type	Date	Size	Options
no notes available	n/a	n/a	n/a	n/a	n/a

Add note

Back

This page gives you access to the documents stored on your LANTIME, especially the manuals and your own notes. The two lists include filename, language, file type, date and size of the documents/notes.

The LANTIME documents can be downloaded from here in order to read / print them on your workstation. The customer notes are a way of storing small pieces of information on your LANTIME, for example if you want to keep track of configuration changes and want to comment them, you can create a note called "config_changes" and show or edit it from here. If you want to get rid of one of your notes, you are able to delete it by choosing the appropriate button.

Manual

Content of /www/manual/customer/english/history.txt:

```
12.08.2009 - Start LANTIME Time Service
20.08.2009 - Firmware Update
```

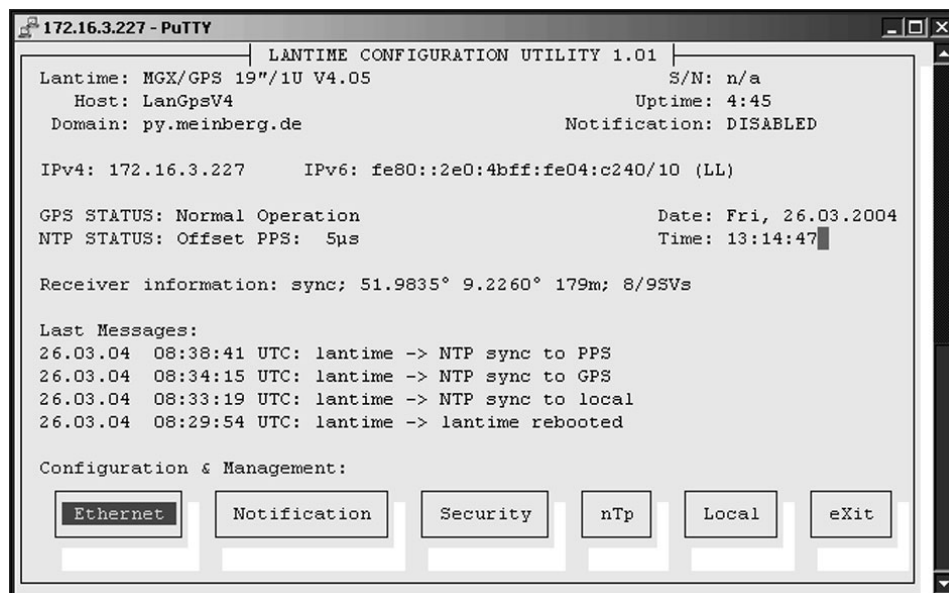
Save file

Close

If you want to add a note (you can maintain more than one note on your LANTIME), after choosing the button "add note" you have to enter a filename (without a directory path, all notes are stored in a fixed directory on the flash disk of your LANTIME) and the language of your note first. After you confirmed these parameters with "Add document", you are able to edit the text of your new note.

13 The Command Line Interface

The command line interface (CLI) can be used within a TELNET or SSH session. After login, just enter “setup” to start the CLI setup tool.



The start page gives a short overview of the most important configuration parameters and the runtime statistics of the unit. In the upper left corner you can read which LANTIME type and version of the LANTIME software you are using. This LANTIME software version is a head version number describing the base system and important subsystem. Below the version you will find the actual hostname and domain of your LANTIME unit, the IPv4 and IPv6 network address of the first network interface and on the right side the serial number, the uptime of the system (time since last boot) and the notification status is reported.

In the second section the actual status of the GPS reference clock and the NTP subsystem is shown, additional information about the GPS receiver can also be found here. This includes the number of satellites in view and the number of good satellites in view.

The third section shows the last messages of the system, each with a timestamp added. The newest messages are placed at the top of the list. This reflects the content of the file `/var/log/messages`, which is created after every start of the system (and is lost after a power off or reboot, see “Syslog server” to learn how to save the entries of your SYSLOG).

By using the buttons in the lower part of the screen, you can reach a number of configuration pages, that are described below.

13.1 CLI Ethernet

In the network configuration all parameters related to the network interfaces can be changed. In the first section you can change the hostname and domain name. You can also specify two nameservers and two SYSLOG servers. In the nameserver and SYSLOG server fields you may enter an IPv4 or IPv6 address (the SYSLOG servers can be specified as a hostname, too).

All information which is written to the LANTIME SYSLOG (/var/log/messages) can be forwarded to one or two remote SYSLOG servers. The SYSLOG daemon of this remote SYSLOG needs to be configured to allow remote systems to create entries. A Linux SYSLOGD can be told to do so by using the command “syslogd -r” for starting the daemon.

If you enter nothing in the SYSLOG server fields or specify 0.0.0.0 as the SYSLOG server’s addresses, the remote SYSLOG service is not started on your LANTIME.

Please be aware of the fact that all SYSLOG entries of the timeserver are stored in /var/log/messages and will be deleted when you power off or reboot the timeserver. A daily CRON job is checking for the size of the LANTIME SYSLOG and deletes them automatically, if their size is exceeding a limit.

By specifying one or two remote SYSLOG servers, you can preserve the SYSLOG information even when you have to reboot or switch off the LANTIME.

In the second section the possible network protocols and access methods can be configured. You can enable/disable TELNET, FTP, SSH, HTTP, HTTPS, SNMP and NETBIOS by checking/unchecking the appropriate check box. After you saved your settings with the “Save” button, all of these subsystems are stopped and restarted (if they are enabled).

The third section allows you to select the IP protocol 6. In this version the IPv4 protocol is mandatory and cannot be disabled, but a standalone IPv6 mode can be reached by entering an IPv4 address “0.0.0.0” and disabling the DHCP client option for every network interface of your LANTIME. By doing so, you ensure that the timeserver cannot be reached with IPv4. Please note that TELNET, FTP and NETBIOS cannot be used over IPv6 in this version. IPv4 and IPv6 can be used together on one LANTIME.

To manage the interface specific parameters, you can enter the Ethernet Configuration Line page by using one of the ETHERNET buttons. If your LANTIME is equipped with only one network interface, you will find only one button (ETHERNET 0). Otherwise you see one button for each installed Ethernet port.

```

|-----| ETHERNET CONFIGURATION LINE 0 |-----|

IPv4:  <TCP/IP address>      172.16.3.226
      <Netmask>              255.255.255.0
      <Gateway>              172.16.3.1
      <DHCP Client>          DISABLED

IPv6:  <IP 1>
      <IP 2>
      <IP 3>
      <Autoconf>             ENABLED

      <Net Link Mode>        Auto
      <High availability bonding> single connection

IPv6: IP Router Advert.:
      Link local: fe80::2e0:4bff:fe04:c240/10

                                     [BACK]

```

Here, the parameters for the network port can be changed. In the upper section of the page you can enter the IPv4 parameters, the lower part gives you access to the IPv6 parameters of the interface.

IPv4 addresses are built of 32 bits, which are grouped in four octets, each containing 8 bits. You can specify an IP address in this mask by entering four decimal numbers, separated by a point ".".

Example: 192.168.10.2

Additionally you can specify the IPv4 Netmask and your default gateway address. Please contact your network administrator, who will provide you with the settings suitable for your specific network.

If you are running a DHCP (Dynamic Host Configuration Protocol) server in your network, the LANTIME system can obtain its IPv4 settings automatically from this server. If you want to use this feature (you should also ask your network administrator if this is applicable in your network), you can change the DHCP Client parameter to "ENABLED". In order to activate the DHCP client functionality, you can also enter the IP address "000.000.000.000" in the LCD menu by using the front panel buttons of the LANTIME. This is the default setting.

The MAC address of your timeserver can be read in the LCD menu by pressing the NEXT button on the front panel twice. This value is often used by the network administrator when setting up the DHCP parameters for your LANTIME at the DHCP server.

If the DHCP client has been activated, the automatically obtained parameters are shown in the appropriate fields (IPv4 address, netmask, gateway).

You can specify up to three IPv6 addresses for your LANTIME timeserver. Additionally you can switch off the IPv6 AUTOCONF feature. IPv6 addresses are 128 bits in length and written as a chain of 16 bit numbers in hexadecimal notation, separated with colons. A sequence of zeros can be substituted with "::" once.

Examples:

"::" is the address, which simply consists of zeros
 ":::1" is the address, which only consists of zeros and a 1 as the last bit.
 This is the so-called host local address of IPv6 and is the equivalent to 127.0.0.1 in the IPv4 world

"fe80::0211:22FF:FE33:4455" is a typical so-called link local address, because it uses the "fe80" prefix.

In URLs the colon interferes with the port section, therefore IPv6-IP-addresses are written in brackets in an URL: "http://[1080::8:800:200C:417A]:80/";
 the last ":80" simply sets the port to 80, the default http port)

If you enabled the IPv6 protocol, the LANTIME always gets a link local address in the format "fe80::...", which is based upon the MAC address of the interface. If a IPv6 router advertiser is available in your network and if you enabled the IPv6 AUTOCONF feature, your LANTIME will be set up with up to three link global addresses automatically.

The next parameter in this sub section is "Netlink mode". This controls the port speed and duplex mode of

the selected Ethernet port. Under normal circumstances, you should leave the default setting ("autosensing") untouched, until your network administrator tells you to change it.

The standard moniker for this technology is IEEE 802.3ad, although it is known by the common names of trunking, port trunking, teaming and link aggregation. The conventional use of bonding under Linux is an implementation of this link aggregation. Only one link is used at any given time. At least two physical Ethernet ports must be linked to one bonding group to activate this feature. The first Ethernet Port in one bonding group provides the IP-Address and the net mask of this new virtual device. The implementation of the LANTIME Bonding feature will not replace the MAC address of the active ethernet port. Depending on the LINK state of the ETH-port the IP address of the first port in the bonding group will be set to the next ethernet port. All services will be restarted automatically.

At this menu point it is possible to add each Ethernet port to a bonding group. At least two physical Ethernet ports must be linked to one bonding group to activate this feature. The first Ethernet Port in one bonding group provides the IP Address and the net mask of this new virtual device.

13.2 CLI Notification

Alarm events

On this page you can set up different notification types for a number of events. This is an important feature because of the nature of a timeserver: running in the background. If an error or problem occurs, the timeserver is able to notify an administrator by using a number of different notification types.

The LANTIME timeserver offers four different ways of informing the administrator or a responsible person about nine different events: EMAIL send an e-mail message to a specified e-mail account, SNMP-TRAP sends a SNMP trap to one or two SNMP trap receivers, WINDOWS POPUP MESSAGE sends a Winpopup message to one or two different computers and DISPLAY shows the alarm message on a wall mount display model VP100/NET, that is an optional accessory you can obtain from us.

"NTP not sync"	NTP is not synchronised to a reference time source
"NTP stopped"	NTP has been stopped (mostly when very large time offsets occur)
"Server boot"	System has been restarted
"Receiver not responding"	No contact to the internal GPS receiver
"Receiver not sync"	Internal GPS clock is not synchronised to GPS time
"Antenna faulty"	GPS antenna disconnected
"Antenna reconnect"	GPS antenna reconnected
"Config changed"	Configuration was changed by a user
„Leap second announced“	A leap second has been announced

Every event can use a combination of those four notification types, of course you can disable notification for events by disabling all notification types. The configuration of the four notification types can be changed in the upper section of the page, you can control which notification is used for which event by using the button "notification conditions" in the lower part of the page.

E-mail messages

You can specify the e-mail address which is used as the senders address of the notification e-mail (From: address), the e-mail address of the receiver (To: address) and a SMTP smarthost, that is a mail server who is forwarding your mail to the receiver. If your LANTIME system is connected to the internet, it can deliver those e-mails itself. Additional e-mail recipients can be configured with the button "CC recipients". These settings cannot be altered with the LC display buttons of the front panel.

Please note the following:

- The LANTIME hostname and domain name should be known to the SMTP smarthost
- A valid nameserver entry is needed
- The domain part of the From: address has to be valid

Condition:	EMail	SNMP	WinMail	Display
NTP not sync	<input checked="" type="checkbox"/>	<input type="checkbox"/>	<input type="checkbox"/>	<input type="checkbox"/>
NTP stopped	<input type="checkbox"/>	<input type="checkbox"/>	<input type="checkbox"/>	<input type="checkbox"/>
Server boot	<input type="checkbox"/>	<input type="checkbox"/>	<input type="checkbox"/>	<input type="checkbox"/>
Receiver not responding	<input type="checkbox"/>	<input type="checkbox"/>	<input type="checkbox"/>	<input type="checkbox"/>
Receiver not sync	<input type="checkbox"/>	<input type="checkbox"/>	<input type="checkbox"/>	<input type="checkbox"/>
Antenna faulty	<input type="checkbox"/>	<input type="checkbox"/>	<input type="checkbox"/>	<input type="checkbox"/>
Antenna reconnect	<input type="checkbox"/>	<input type="checkbox"/>	<input type="checkbox"/>	<input type="checkbox"/>
Config changed	<input type="checkbox"/>	<input type="checkbox"/>	<input type="checkbox"/>	<input type="checkbox"/>
Leap Second announced	<input type="checkbox"/>	<input type="checkbox"/>	<input type="checkbox"/>	<input type="checkbox"/>

BACK

Windows Popup Messages

Most Microsoft Windows operating systems provide you with a local notification tool.



You can send messages via the special Windows protocol in your local network. It is not necessary to enable the NETBIOS protocol of the LANTIME in order to use this notification. On the Windows client side it is necessary to activate the "Microsoft Client for Windows" in the network configuration.

You can enter the Windows computer name of up to two Windows PCs in the appropriate fields. Every message contains a time stamp and a plain text message:

SNMP-TRAP messages

Up to two SNMP trap receiver hosts can be configured in this subsection, you may use IPv4 or IPv6 addresses or specify a hostname. Additionally you have to enter a valid SNMP community string for your trap receiving community. These are mostly independent from the SNMP community strings used for status monitoring and configuration (see SNMP configuration on the "Security" page).

VP100/NET wall mount display

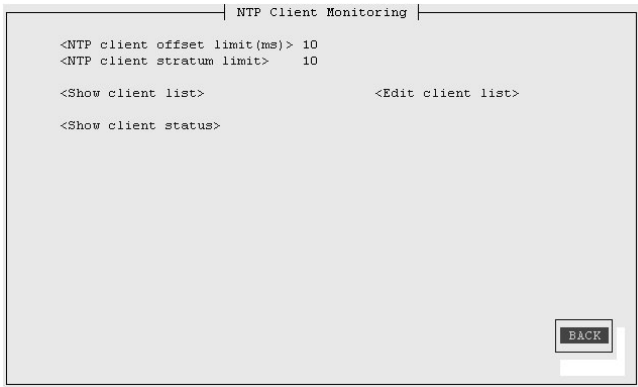
The VP100/NET wall display is an optional accessory for the LANTIME timeserver, it has an own integrated Ethernet port (10/100 Mbit) and a SNTP client. The time of the display can be received from any NTP server using the SNTP protocol, additionally the display is able to show text messages, which are sent by using special software. The LANTIME can send an alarm message to one or two VP100/NET displays over the network, whenever an event occurs, for which you selected the display notification type. An alarm message is shown three times as a scrolling message.

Just enter the display's IP address and its serial number (this is used for authorization), which can be found by pressing the red SET button on the back of the display four times. The serial number consists of 8 characters, representing four bytes in hexadecimal notation.

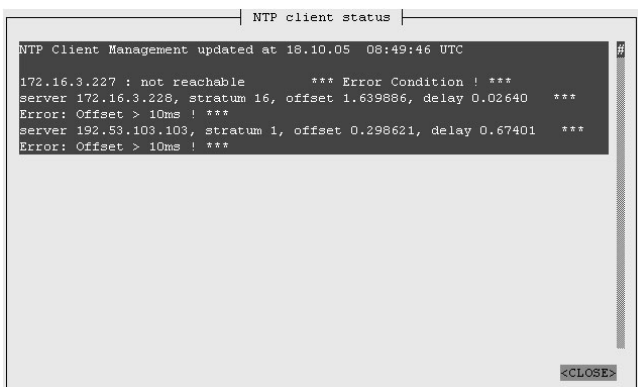
If you want to use the display for other purposes, you can send text messages to it by using our command line tool send2display, which can be found on the LANTIME. This allows you to use the display by CRON jobs or your own shell scripts etc. If you run the tool without parameters, a short usage screen is shown, explaining all parameters it may understand. See appendix for a printout of this usage screen.

NTP Client Monitoring

You can monitor a group of NTP clients and supervise the time offset, the NTP stratum value and if the client is reachable or not. With the button „edit client list“ you can edit the list of clients to monitor. You can add the TCP/IP address or the hostname of the client:

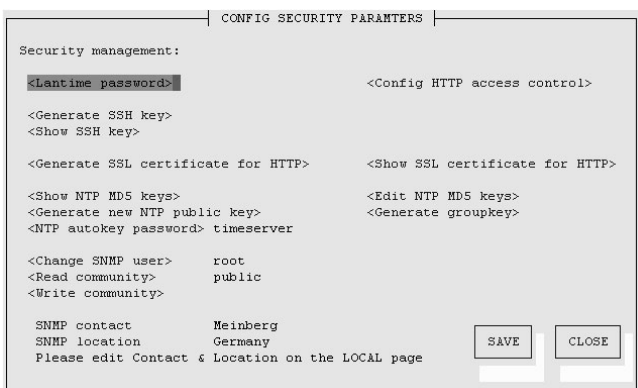


You can monitor the current states of the configured clients:



13.3 CLI Security

On the “Security” page you can manage all security relevant parameters for your timeserver. In the first section “Login” the administration password can be changed, which is used for SSH, TELNET, FTP, HTTP and HTTPS access.



The password is stored encrypted on the internal flash disk and can only be reset to the default value “timeserver” by a “factory reset”, changing all settings back to the factory defaults. Please refer to the LCD configuration

section in this manual.

SSH Secure Shell Login

The SSH provides you with a secure shell access to your timeserver. The connection is encrypted, so no readable passwords are transmitted over your network. The actual LANTIME version supports SSH1 and SSH2 over IPv4 and IPv6. In order to use this feature, you have to enable the SSHD subsystem and a security key has to be generated on the timeserver by using the “Generate SSH key” button. Afterwards, a SSH client can connect to the timeserver and opens a secure shell:

```
ssh root @ 192.168.16.111
```

The first time you connect to a SSH server with an unknown certificate, you have to accept the certificate, afterwards you are prompted for your password (which is configured in the first section of this page). If you generate a new SSH key, you can copy and paste it into your SSH client configuration afterwards in order to allow you to login without being prompted for a password. We strongly recommend to use SSH for shell access, TELNET is a very insecure protocol (transmitting passwords in plain text over your network).

If you enabled SSH, your LANTIME automatically is able to use secure file transfer with SCP or SFTP protocol. The usage of FTP as a file transfer protocol is as insecure as using TELNET for shell access.

Generate SSL Certificate for HTTPS

HTTPS is the standard for encrypted transmission of data between web browser and web server. It relies on X.509 certificates and asymmetric crypto procedures. The timeserver uses these certificates to authenticate itself to the client (web browser). The first time a web browser connects to the HTTPS web server of your LANTIME, you are asked to accept the certificate of the web server. To make sure that you are talking to your known timeserver, check the certificate and accept it, if it matches the one stored on the LANTIME. All further connections are comparing the certificate with this one, which is saved in your web browser configuration. Afterwards you are prompted to verify the certificate only when it changed.

By using the button “Generate SSL certificate for HTTP” you can create a new certificate. Please enter your organisation, name, mail address and the location in the upcoming form and press “Generate SSL certificate” to finally generate it.

NTP keys and certificates

The fourth and fifth section of the “Security” page allow you to create the needed crypto keys and certificates for secure NTP operation (please see NTP authentication below).

The function “Generate new NTP public key” is creating a new self-signed certificate for the timeserver, which is automatically marked as “trusted”.

Important note: This certificate is depending on the hostname of your LANTIME, it is mandatory to recreate the certificate after changing the hostname. The certificates are build with the internal command “ntp-keygen -T” (ntp-keygen is part of the installed NTP suite). Your LANTIME is using the /etc/ntp/ directory for storing its private and public keys (this is called the “keysdir”). Please refer to the chapter “NTP Autokey” for further information (below).

The two options “Show NTP MD5 key” and “Edit NTP MD5 keys” allow you to manage the symmetric keys used by NTP. More about that can be found in the chapter about symmetric keys (below).

13.4 CLI NTP Parameter

The screenshot shows a window titled "CONFIG NTP PARAMETERS". Inside, there are several configuration fields and buttons. The fields are organized into sections: "<Config External NTP Server>", "<Stratum of local clock>", "<Local Clock>", "<PPS>", "<Autokey>", "<Trusted key>", and "<NTP trust time>". The buttons are "SAVE" and "CLOSE".

```

CONFIG NTP PARAMETERS

<Config External NTP Server>

<NTP Broadcast address> 0
<NTP Broadcast interval>
  <Autokey> DISABLED <Key>

<Stratum of local clock> 12
  <Local Clock> ENABLED

  <PPS> ENABLED
  <Autokey> DISABLED

  <Trusted key>

  <NTP trust time> 0 hour(s)

  <Edit additional NTP Parameter> <Show current NTP configuration>

  SAVE CLOSE
  
```

The NTP configuration page is used to set up the additional NTP parameters needed for a more specific configuration of the NTP subsystem.

The default configuration of the timeserver consists of a local clock, which represents the hardware clock of your LANTIME system and the GPS reference clock. The local clock is only chosen as the NTP time reference after the GPS clock lost its synchronisation. The stratum level of this local clock is set to 12, this ensures that clients recognise the switchover to the local clock and are able to eventually take further actions. The local clock can be disabled.

Because the GPS reference clock is internally connected to the LANTIME system by using a serial connection, the accuracy using this way of synchronisation is around 1 ms. The high accuracy of the LANTIME timeserver (around 10 microseconds) is available by using the ATOM driver of the NTP subsystem, which is directly interpreting the PPS (pulse per second) of the GPS reference clock. The default configuration looks like this:

```

# *** lantime ***
# NTP.CONF for GPS167 with UNI ERLANGEN

server      127.127.1.0          # local clock
fudge       127.127.1.0 stratum 12 # local stratum
server      127.127.8.0 mode 135 prefer # GPS167 UNI Erlangen PPS
fudge       127.127.8.0 time1 0.0042 # relative to PPS
server      127.127.22.0         # ATOM (PPS)
fudge       127.127.22.0 flag3 1    # enable PPS API

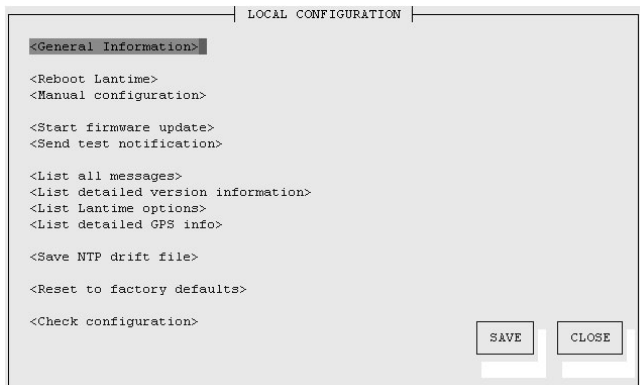
enable stats
statsdir /var/log/
statistics loopstats
driftfile /etc/ntp.drift

# Edit /mnt/flash/ntpconf.add to add additional NTP parameters
  
```

13.4.1 CLI NTP Authentication

Please see the corresponding chapter in the web interface description.

13.5 CLI Local



Administrative functions

In the first section there are several functions which may be used by the administrator. The button “Reboot LAN-TIME” is restarting the system, the built-in reference clock is not affected by this, only the included computer system is rebooted, which may take up to 30 seconds.

With “Manual configuration” you are able to change the main configuration by editing the configuration file by hand. After editing, press the “Save file” button to preserve your changes, afterwards you are asked if your changes should be activated by reloading the configuration (this results in reloading several subsystems like NTPD, HTTPD etc.).

The function “Send test notification” is generating a test alarm message and sends it using all configured notify possibilities (e-mail, WMail, SNMP-Traps, wall mount display).

You can use the function “Save NTP drift file” to copy the file `/etc/ntp.drift` to the internal flash disc of your LANTIME. NTP is using this file to have the parameters for compensation of the incorrectness of the system clock available directly after a restart. This results in a faster synchronisation process of the NTPD subsystem after a system restart. You should use this function only, if the NTPD has been synchronized to the internal reference clock for more than one day. This is done here at Meinberg directly before shipping the LANTIME unit to our customers, so you do not need to use this function during normal operation. It may be applicable after a software update.

The function “Reset to factory defaults” is setting all configuration parameters back to default values. The regular file `/mnt/flash/global_configuration` will be replaced with the file `/mnt/flash/factory.conf`, but first a copy of the configuration is saved under `/mnt/flash/global_configuration.old` for backup reasons. The default password “timeserver” is replacing the actual password, too. After using this function, all certificates should be recreated because of the change of the unit’s hostname.

Please be aware of the fact that the default configuration is not activated instantly. If you want to avoid setting up the IP address of your unit by locally configuring it on site with the buttons of the front panel (meaning physical presence of someone directly at the location of the LANTIME), you have to configure the network parameters of your LANTIME immediately after using the “reset to factory defaults” button. So, please proceed directly to the Ethernet page and check/change the IP address and the possible access subsystems (HTTP for example) of the LANTIME. The first usage of “Save settings” will load the configuration from flash into memory and activate it.

User Management

For administration different users can be set up. 3 group memberships can be assigned to each user: the Super-User has all properties for administration. The group membership Administrator can change all parameters via the command line interface (CLI) configuration tool and the WEB interface. The group Administrator cannot use any Linux command in a Telnet, SSH or Terminal session. If the Administrator will login, the setup program

will be started directly. After termination of the Setup program this user will be logout automatically. The group membership "Info" has the same properties like the Administrator but cannot change any parameter. The menu "User Management" allows you to set up different users with a password and the group membership. To change the properties of an user you have to delete the old user and set up a new one. The user "root" cannot be deleted and has always the membership of Super-User. The password of the user "root" can be set on the security page.

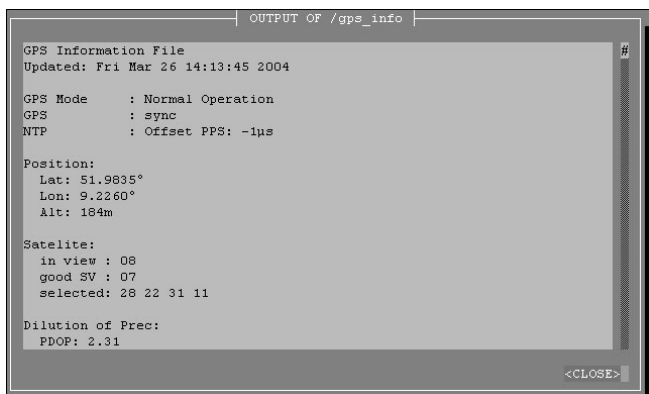
Administrative information

The button "List all messages" displays the SYSLOG of the LANTIME completely. In this log all subsystems create their entries, even the OS kernel. The SYSLOG file /var/log/messages is only stored in the system's ram disk, therefore it is lost after a power off or restart. If you configured an external SYSLOG server, all LANTIME SYSLOG entries will be duplicated on this remote system and can be saved permanently this way.

```
Mar 15 13:35:17 LanGpsV4 ntpd[12948]: ntpd 4.2.0@1.1161-r Fri Mar 5 15:58:48 CET 2004 (3)
Mar 15 13:35:17 LanGpsV4 ntpd[12948]: signal_no_reset: signal 13 had flags 4000000
Mar 15 13:35:17 LanGpsV4 ntpd[12948]: precision = 3.000 usec
Mar 15 13:35:17 LanGpsV4 ntpd[12948]: kernel time sync status 2040
Mar 15 13:35:17 LanGpsV4 ntpd[12948]: frequency initialized 45.212 PPM from /etc/ntp.drift
Mar 15 13:38:36 LanGpsV4 lantime[417]: NTP sync to GPS
Mar 15 13:38:36 LanGpsV4 lantime[417]: NTP restart
Mar 15 13:45:36 LanGpsV4 proftpd[14061]: connect from 172.16.3.2 (172.16.3.2)
Mar 15 14:01:11 LanGpsV4 login[15711]: invalid password for 'root' on 'tty1' from '172.16.3.45'
Mar 15 14:01:17 LanGpsV4 login[15711]: root login on 'tty1' from '172.16.3.45'
```

With "List detailed version information" a number of version numbers (including LANTIME software, operating system and NTPD) are shown in a textbox.

The function "List LANTIME Options" shows the hardware options installed in your LANTIME.



Using the button "List detailed GPS information" gives you the possibility to check detailed GPS status information. The first parameter indicates the time and date of the last update of the shown parameters. Next you find the GPS receiver status and the NTP status, followed by the GPS position data. The position uses the Latitude / Longitude / Altitude format. Latitude and Longitude are shown in degrees, minutes and seconds, Altitude is shown in meters above WGS84 ellipsoid.

The satellite section shows the numbers of satellites in view and the number of usable satellites ("good SV"). Additionally, the selected set of the four used satellites can be read.

The accuracy of the calculated receiver position and time deviation is dependent on the constellation of the four selected satellites. Using the position of the receiver and the satellites, a number of values can be calculated, which allow a rating of the selected constellation. These values are called "Dilutions of Precision (DOP)".

PDOP is the abbreviation for "Position Dilution of Precision", TDOP means "Time Dilution of Precision" and GDOP stands for "General Dilution of Precision". Lower values are indicating better accuracy.

The next section "Satellite Info" shows information about all the satellites, which are in view momentarily. The satellite ID, elevation, Azimuth and distance to the receiver reveal the position of the satellite in the sky. The

Doppler shows whether the satellite is ascending (positive values) or descending (negative value).

Software Update

If you need to update the software of your LANTIME, you need a special file `update.tgz` from Meinberg, which has to be uploaded to the LANTIME by using ftp, SCP or SFTP to the root dir (`/update.tgz`), after the file transfer is complete, press "Start firmware update".

Afterwards you are prompted to confirm the start of the update process. The scope of the update only depends on the chosen file.

14 SNMP Support

The Simple Network Management Protocol (SNMP) has been created to achieve a standard for the management of different networks and the components of networks. SNMP is operating on the application layer and uses different transport protocols (like TCP/IP and UDP), so it is network hardware independent.

The SNMP design consists of two types of parties, the agent and the manager. SNMP is a client-server architecture, where the agent represents the server and the manager represents the client.

The LANTIME has an integrated SNMP agent, who is designed especially to handle SNMP requests for LANTIME specific status information (including status variables for the internal reference clock). The LANTIME SNMP agent is also capable of handling SET requests in order to manage the LANTIME configuration via SNMP, if your SNMP management software is also supporting this feature.

The elements (objects / variables) are organised in data structures called Management Information Base (MIB). The LANTIME includes the standard NET-SNMP MIB and is based on SNMPv1 (RFC 1155, 1157), SNMPv2 (RFC 1901-1908) and SNMPv3.

The following SNMP version is installed on the timeserver:

Net-SNMP Version:	5.0.8
Network transport support:	Callback Unix TCP UDP TCPIPv6 UDPIPv6
SNMPv3 Security Modules:	usm
Agent MIB code:	mibII, ucd_snmp, snmpv3mibs, notification, target, agent_mibs, agentx agent_mibs, utilities, meinberg, mibII/ipv6
Authentication support:	MD5 SHA1
Encryption support:	DES

By using the special Meinberg SNMP-agent all important status variables can be read with SNMP conformant client software. Where applicable, a variable is implemented as string and numeric value, for example allowing SNMP client software to use the information for drawing diagrams or monitor threshold levels.

When using the NET-SNMP suite, you can read all status information your LANTIME offers via SNMP by using the `snmpwalk` command:

`snmpwalk -v2c -c public timeserver enterprises.5597`

```
...mbgLtNtp.mbgLtNtpCurrentState.0 = 1 : no good refclock (->local)
...mbgLtNtp.mbgLtNtpCurrentStateVal.0 = 1
...mbgLtNtp.mbgLtNtpStratum.0 = 12
...mbgLtNtp.mbgLtNtpActiveRefclockId.0 = 1
...mbgLtNtp.mbgLtNtpActiveRefclockName.0 = LOCAL(0)
...mbgLtNtp.mbgLtNtpActiveRefclockOffset.0 = 0.000 ms
...mbgLtNtp.mbgLtNtpActiveRefclockOffsetVal.0 = 0
...mbgLtNtp.mbgLtNtpNumberOfRefclocks.0 = 3
...mbgLtNtp.mbgLtNtpAuthKeyId.0 = 0
...mbgLtNtp.mbgLtNtpVersion.0 = 4.2.0@1.1161-r Fri Mar 5 15:58:56 CET 2004 (3)

...mbgLtRefclock.mbgLtRefClockType.0 = Clock Type: GPS167 1HE
...mbgLtRefclock.mbgLtRefClockTypeVal.0 = 1
...mbgLtRefclock.mbgLtRefClockMode.0 = Clock Mode: Normal Operation

...mbgLtRefclock.mbgLtRefClockModeVal.0 = 1
```

```
...mbgLtRefclock.mbgLtRefGpsState.0 = GPS State: sync
...mbgLtRefclock.mbgLtRefGpsStateVal.0 = 1
...mbgLtRefclock.mbgLtRefGpsPosition.0 = GPS Position: 51.9834° 9.2259° 181m
...mbgLtRefclock.mbgLtRefGpsSatellites.0 = GPS Satellites: 06/06
...mbgLtRefclock.mbgLtRefGpsSatellitesGood.0 = 6
...mbgLtRefclock.mbgLtRefGpsSatellitesInView.0 = 6
...mbgLtRefclock.mbgLtRefPzfState.0 = PZF State: N/A
...mbgLtRefclock.mbgLtRefPzfStateVal.0 = 0
...mbgLtRefclock.mbgLtRefPzfKorrelation.0 = 0
...mbgLtRefclock.mbgLtRefPzfField.0 = 0
```

Please note that you only see the object names (like "mbgLtRefclock.mbgLtRefPzfField") if you installed the Meinberg MIB files on your client workstation first (please see the web interface or CLI setup tool chapters to find out how to do this).

By using the standard MIB, no NTP get requests are allowed. Only the standard system and network parameters can be accessed (e.g. using the NET-SNMP command "snmpget").

Only by using the Meinberg MIB the change of configuration parameters is possible (the command "snmpset" is used to alter a variable, for example).

14.1 Configuration over SNMP

The LANTIME timeserver can be configured via several user interfaces. Besides the possibility to setup its parameters with the web interface (HTTP and/or HTTPS) and the direct shell access via Telnet or SSH, a SNMP based configuration interface is available.

In order to use the SNMP configuration features of the timeserver, you need to fulfil the following requirements (the system has to be reachable over the network, of course):

- a) SNMP has to be activated in the timeservers setup by setting up a RWCOMMUNITY
- b) In the SNMP configuration the read-write-access needs to be activated
- c) The timeserver-specific MIB files must be present on the clients, they have to be included in the SNMP setup of the client software

a) and b) can be achieved by using the web interface or the shell access, please see the appropriate chapters in this manual. The mentioned MIB files can be found directly on the timeserver located at /usr/local/share/snmp/mibs. All files with names starting with "MBG-SNMP-" have to be copied onto the SNMP clients by using the timeservers ftp access (for example). You may also use the web interface, on the page "Local - LANTIME Services" (V5) or "System - Services and Functions" (V6) you will find a button "Download MIB files". You will get a tar-archive if you are using the download button, which you have to unpack first.

Afterwards, copy all MIB files to the MIB directory on your client(s) and configure your SNMP client software to use them.

14.1.1 Examples for the usage of the SNMP configuration features

The following examples are using the software net-snmp, a SNMP open source project. You will find detailed information at www.net-snmp.org!

To browse the configuration branch of the timeserver-MIB, you could use the following command on a UNIX system with net-snmp SNMP tools installed:

```
root@testhost:/# snmpwalk -v 2c -c public timeserver.meinberg.de mbgLtCfg

MBG-SNMP-LANTIME-CFG-MIB::mbgLtCfghostname.0 = STRING: LantimeSNMPTTest
MBG-SNMP-LANTIME-CFG-MIB::mbgLtCfgDomainname.0 = STRING: py.meinberg.de
MBG-SNMP-LANTIME-CFG-MIB::mbgLtCfgNameserver1.0 = STRING: 172.16.3.1
MBG-SNMP-LANTIME-CFG-MIB::mbgLtCfgNameserver2.0 = STRING:
MBG-SNMP-LANTIME-CFG-MIB::mbgLtCfgSyslogserver1.0 = STRING:
MBG-SNMP-LANTIME-CFG-MIB::mbgLtCfgSyslogserver2.0 = STRING:
[ ... ]
```

To alter a parameter, with net-snmp you would use the snmpset command:

```
root@testhost:/# snmpset -v 2c -r 0 -t 10 -c rwsecret timeserver.meinberg.de
mbgLtCfghostname.0 string „helloworld“

MBG-SNMP-LANTIME-CFG-MIB::mbgLtCfghostname.0 = STRING: helloworld
root@testhost:/#
```

Please note that your SNMP request has to be sent with a sufficient timeout (in the above snmpset example this was achieved by using the “-t 10” option, choosing a timeout of 10 seconds), because after each parameter change, the timeserver reloads its configuration, which takes a few seconds. The request is acknowledged by the SNMP agent afterwards.

To change a group of parameters without reloading the configuration after each parameter, you have to send all parameter changes in one single request. You can do this with the net-snmp snmpset command by specifying multiple parameters in one command line:

```
root@testhost:/# snmpset -v 2c -r 0 -t 10 -c rwsecret timeserver.meinberg.de
mbgLtCfghostname.0 string „helloworld“ mbgLtCfgDomainname.0 string
„internal.meinberg.de“

MBG-SNMP-LANTIME-CFG-MIB::mbgLtCfghostname.0 = STRING: helloworld
MBG-SNMP-LANTIME-CFG-MIB::mbgLtCfgDomainname.0 = STRING: internal.meinberg.de

root@testhost:/#
```

The available SNMP variables are described in detail in the “SNMP configuration reference” part of this manual. Additionally, it is recommended to also read the mentioned MIB files.

14.1.2 Further configuration possibilities

Because the timeserver uses a standard version of the net-snmp SNMP daemon (with extended features covering the timeserver-specific functions), all configuration parameters of the SNMPD can be used. The configuration file of the SNMP daemon is located at `/usr/local/share/snmp` after boot time, the filename is `snmpd.conf`.

During the boot sequence, this file is created dynamically by using a template file and appending the SNMP parameters stored in the timeserver setup.

If you need to customize the configuration of the timeservers SNMPD (for setting up detailed access control rights for example), you may edit `/mnt/flash/packages/snmp/etc/snmpd_conf.default` (which is the mentioned template file). Please note that some lines are appended to this file (as described above), before it is used as `/usr/local/share/snmp/snmpd.conf` by the `snmpd` process.

14.1.3 Send special timeserver commands with SNMP

The timeserver is capable of receiving special commands by SNMP in order to reboot the unit or reload its configuration after you manually changed it. A special SNMP variable is reserved for this (`mbgLtCmdExecute`) and has to be set to a special integer value for each command. The following commands are available:

Reboot(1)

Setting the `mbgLtCmdExecute` variable to value 1 will reboot the timeserver after a short waiting period of approximately 3-5 seconds.

FirmwareUpdate(2)

This command installs a previously uploaded (with FTP for example) firmware version.

ReloadConfig(3)

The parameters of the timeserver configuration (stored in `/mnt/flash/global_configuration`) are re-read and afterwards a number of subsystems (e.g. NTPD, HTTPD/HTTPS, SMBD) will be restarted in order to use those eventually changed settings. Please note that the SNMPD will not be restarted by this command (you have to use reboot instead or restart it manually by killing the process and starting it again in the shell).

GenerateSSHKey(4)

A new SSH key will be generated.

GenerateHTTPSKey(5)

A new HTTPS key will be generated.

ResetFactoryDefaults(6)

The configuration of the timeserver is reset to factory defaults, afterwards an automatic `ReloadConfig` is executed in order to use these default settings.

GenerateNewNTPAutokeyCert(7)

A new key is generated, it can be used with the NTP AUTOKEY feature.

SendTestNotification(8)

A test message is sent by using all notification methods the timeserver has a configuration for (e.g. mail, win-popup, SYSLOG etc.).

A few examples:

(we are again using the `snmpset` command which comes with the net-snmp tools).

```
root@testhost:/# snmpset -v2c -r 0 -t 10 -c rwsecret timeserver.meinberg.de
mbgLtCmdExecute.0 int 1
```

```
MBG-SNMP-LANTIME-CMD-MIB::mbgLtCmdExecute.0 = INTEGER: Reboot(1)
root@testhost:/#
```

The command shown above is forcing the timeserver to reboot. Instead of using the integer value, you may also enter the command name, as it is defined in the MIB file MBG-SNMP-LANTIME-CMD.txt (and in the command list above).

If you want the timeserver to reload it's configuration file (which you previously uploaded via FTP probably), you would enter this command:

```
root@testhost:/# snmpset -v2c -r 0 -t 10 -c rwsecret timeserver.meinberg.de  
mbgLtCmdExecute.0 int ReloadConfig
```

```
MBG-SNMP-LANTIME-CMD-MIB::mbgLtCmdExecute.0 = INTEGER: ReloadConfig(3)  
root@testhost:/#
```

Please pay attention to the options “-r 0” (meaning “no retries”) and “-t 10” (meaning “timeout of 10 secs”) in the above examples. These options avoid multiple executions of the desired command, additionally they give your snmpset command enough time to wait for an acknowledgement from the timeservers snmp agent.

14.1.4 Configuration of the timeserver with SNMP: Reference

The MIB of the timeserver includes the following parts:

SNMP Object	Name	Description
enterprises.5597	mbgSNMP	Root node of the Meinberg-MIB
mbgSNMP.3	MbgLANTIME	Root node of the LANTIME MIB
mbgLANTIME.1	mbgLtNtp	LANTIME NTP status variables
mbgLANTIME.2	mbgLtRefclock	LANTIME reference time source status variables
mbgLANTIME.3	mbgLtTraps	LANTIME SNMP traps
mbgLANTIME.4	mbgLtCfg	LANTIME configuration variables
mbgLANTIME.5	mbgLtCmd	LANTIME control commands

Further detailed information can be found in the Meinberg MIB files.

Reference of LANTIME SNMP configuration variables:

SNMP branch	Variable	Data type	Description
mbgLtCfgNetwork	mbgLtCfghostname	string	The hostname of the timeserver
	mbgLtCfgDomainname	string	The Domainname of the timeserver
	mbgLtCfgNameserver1	string (IPv4 or IPv6-address)	IP-address of first nameserver
	mbgLtCfgNameserver2	string (IPv4 or IPv6-address)	IP-address of second nameserver
	mbgLtCfgSyslogserver1	string (IPv4 or IPv6-address or hostname)	IP-address or hostname of first syslog-server
	mbgLtCfgSyslogserver2	string (IPv4 or IPv6-address or hostname)	IP-address or hostname of second syslog-server
	mbgLtCfgTelnetAccess	integer (0 = disabled, 1 = enabled)	Telnet access activated?
	mbgLtCfgFTPAccess	integer (0 = disabled, 1 = enabled)	FTP-access activated?
	mbgLtCfgHTTPAccess	integer (0 = disabled, 1 = enabled)	Webinterface activated?
	mbgLtCfgHTTPSAccess	integer (0 = disabled, 1 = enabled)	Encrypted webinterface activated?
	mbgLtCfgSNMPAccess	integer (0 = disabled, 1 = enabled)	SNMP-daemon activated?

SNMP branch	Variable	Data type	Description
mbgLtCfgNTP	mbgLtCfgSambaAccess	integer (0 = disabled, 1 = enabled)	LANManager-access activated?
	mbgLtCfgIPv6Access	integer (0 = disabled, 1 = enabled)	IPv6-protocol enabled?
	mbgLtCfgSSHAccess	integer (0 = disabled, 1 = enabled)	SSH-access activated?
	mbgLtCfgNtpServer1IP	string (IPv4 or IPv6-address or hostname)	First external NTP-server
	mbgLtCfgNtpServer1KEY	integer	Link to the key which should be used for the first NTP-server
	mbgLtCfgNtpServer2IP	string (IPv4 or IPv6-address or hostname)	Second external NTP-server
	mbgLtCfgNtpServer2KEY	integer	Link to the key which should be used for the second NTP-server
	mbgLtCfgNtpServer3IP	string (IPv4 or IPv6-address or hostname)	Third external NTP-server
	mbgLtCfgNtpServer3KEY	integer	Link to the key which should be used for the third NTP-server
	mbgLtCfgStratumLocal Clock	integer(0..15)	Stratum-value of the internal system clock of the timeserver
	mbgLtCfgNTPTrustedKey	integer	Link to the key which should be used for the internal reference time source
	mbgLtCfgNTPBroadcastIP	string (IPv4 or IPv6-address)	IP-address, which has to be used for NTP-broadcasts (or multicasts)
	mbgLtCfgNTPBroadcast Key	integer	Link to the key which should be used for outgoing NTP-broadcasts
	mbgLtCfgNTPBroadcast Autokey	integer (0 = disabled, 1 = enabled)	Use autokey for NTP broadcasts?
	mbgLtCfgAutokeyFeature	integer (0 = disabled, 1 = enabled)	Use autokey feature of the NTP server?

SNMP branch	Variable	Data type	Description
mbgLtCfgEMail	mbgLtCfgAtomPPS	integer (0 = disabled, 1 = enabled)	Atom PPS (pulse per second) activated?
	mbgLtCfgEMailTo	string (Liste von EMail-addressen)	One or more (semicolon separated) email address(es). which should receive warnings and alarm notifications from the timeserver
	mbgLtCfgEMailFrom	string (EMail-address)	The EMail-address which is used as the senders address for email notifications
mbgLtCfgSNMP	mbgLtCfgEMailSmarthost	string (IPv4 or IPv6-address or hostname)	The SMTP-host, which is used for sending mails
	mbgLtCfgSNMPTrapReceiver1	string (IPv4 or IPv6-address or hostname)	First host, which receives notifications sent as SMTP-traps
	mbgLtCfgSNMPTrapReceiver1Community	string	The SNMP community used when sending SNMP-Traps to the first host
	mbgLtCfgSNMPTrapReceiver2	string (IPv4 or IPv6-address or hostname)	Second host, which receives notifications sent as SMTP-traps
	mbgLtCfgSNMPTrapReceiver2Community	string	The SNMP community used when sending SNMP-Traps to the second host
	mbgLtCfgSNMPROCommunity	string	The SNMP community, which has read-only access and therefore can be used to only monitor status variables or configuration values (SNMP V2c)
	mbgLtCfgSNMPRWCommunity	string	The SNMP community, which has read-write access and there for can be used to monitor status variables and get/set configuration values (SNMP V2c)
	mbgLtCfgSNMPContact	string	Contact information (e.g. name of a contact person) of the timeserver
mbgLtCfgWinpopup	mbgLtCfgWMailAddress1	string	First receiver of notifications sent as windows popup messages
	mbgLtCfgWMailAddress2	string	Second receiver of notifications sent as windows popup messages

SNMP branch	Variable	Data type	Description
mbgLtCfgWalldisplay	mbgLtCfgVP100Display1IP	string (IPv4 or IPv6-address or hostname)	hostname or IP-address of the first wall-mount display used for showing notifications
	mbgLtCfgVP100Display1SN	string (Hexstring)	The serial number of the first wall mount display used for showing notifications (can be found in the setup menu of the display)
	mbgLtCfgVP100Display2IP	string (IPv4 or IPv6-address or hostname)	hostname or IP-address of the second wall mount display used for showing notifications
	mbgLtCfgVP100Display2SN	string (Hexstring)	The serial number of the first wall mount display used for showing notifications (can be found in the setup menu of the display)
mbgLtCfgNotify	mbgLtCfgNotifyNTPNotSync	string(combination)	Exactly one, none or a combination of the following notification types: email = sending an email wmail = sending a winpopup-message snmp = sending a SNMP-trap, disp = showing on wall mount display, syslog = sending a syslog-entry for the event „NTP not synchronized“
	mbgLtCfgNotifyNTPStopped	string (combination)	(see mbgLtCfgNotifyNTPNotSync) for the event „NTP Daemon stopped“
	mbgLtCfgNotifyServerBoot	string (combination)	(see mbgLtCfgNotifyNTPNotSync) for the event „Timeserver reboot“
	mbgLtCfgNotifyRefclockNotResponding	string (combination)	(see mbgLtCfgNotifyNTPNotSync) for the event „Refclock not ready“
	mbgLtCfgNotifyRefclockNotSync	string (combination)	(see mbgLtCfgNotifyNTPNotSync) for the event „Refclock not synchron“
	mbgLtCfgNotifyAntennaFaulty	string (combination)	(see mbgLtCfgNotifyNTPNotSync) for the event „GPS antenna not connected or damaged“
	mbgLtCfgNotifyAntennaReconnect	string (combination)	(see mbgLtCfgNotifyNTPNotSync) for the event „GPS antenna reconnected“
	mbgLtCfgNotifyConfigChanged	string (combination)	(see mbgLtCfgNotifyNTPNotSync) for the event „Configuration changed“
	mbgLtCfgNotifyLeapSecondAnnounced	string (combination)	(see mbgLtCfgNotifyNTPNotSync) for the event „Leap second announced“

SNMP branch	Variable	Data type	Description
mbgLtCfgEthernet	mbgLtCfgEthernetIf0IPv4 IP	string (IPv4 IP-address)	IPv4-address of first network interface of the timeserver
	mbgLtCfgEthernetIf0IPv4 Netmask	string (IPv4 Netmaske)	IPv4-netmask of first network interface of the timeserver
	mbgLtCfgEthernetIf0IPv4 Gateway	string (IPv4 IP-address)	IPv4-address of the default gateway of the timeservers first network interface
	mbgLtCfgEthernetIf0DHCP Client	integer (0 = disabled, 1 = enabled)	Configure the first network interface of the timeserver with DHCP?
	mbgLtCfgEthernetIf0IPv6 IP1	string (IPv6 IP-address)	First IPv6-IP-address of the timeservers first network interface
	mbgLtCfgEthernetIf0IPv6 IP2	string (IPv6 IP-address)	Second IPv6-IP-address of the timeservers first network interface
	mbgLtCfgEthernetIf0IPv6 IP3	string (IPv6 IP-address)	Third IPv6-IP-address of the timeservers first network interface
	mbgLtCfgEthernetIf0IPv6 Autoconf	integer (0 = disabled, 1 = enabled)	Activate autoconf for the IPv6 - configuration of the timeservers first network interface?
	mbgLtCfgEthernetIf0 NetlinkMode	integer (0..4)	Configuration of the network-speed and duplex settings of the timeservers first network interface 0 = autosensing, 1 = 10Mbit/s half duplex, 2 = 10Mbit/s full duplex, 3 = 100Mbit/s half duplex, 4 = 100Mbit/s full duplex

For all additional Ethernet interfaces of the timeserver, "If0" only has to be replaced with "Ifx", where "x" is substituted by the number of the desired Ethernet interface. Example: The IPv4-address of the timeservers third Ethernet interface can be set with mbgLtCfgEthernetIf2IPv4IP!

14.2 SNMP Traps

If configured, the LANTIME is sending SNMP traps, which can be received by up to 2 SNMP management systems. These traps can be received by using the NET-SNMP suite tool "snmptrapd", you can start it on a UNIX system with "snmptrapd -p" (-p is for output to stdout, -s would use the syslog for output). The corresponding MIB files can be found on the LANTIME at /usr/local/share/snmp/mibs/, all Meinberg specific MIB files are named "MBG-SNMP....". These MIB files can be downloaded by using the web interface (see "Local" page, "Download MIB files" button), after unpacking the archive file you can import the MIB files into your management system.

The following SNMP-traps are available:

"NTP not sync"	NTP not synchronised to refclock
"NTP stopped"	NTP stopped
"Server boot"	System has rebooted
"Receiver not responding"	no answer from GPS
"Receiver not sync"	GPS receiver not synchronised
"Antenna faulty"	GPS antenna not connected
"Antenna reconnect"	GPS antenna reconnected
"Config changed"	System parameter changed by user
„Leap second announced“	Leap second announced

See the "Notification" page at the web interface and Command Line Interface description to learn how to configure the SNMP trap receivers.

14.2.1 SNMP Trap Reference

All traps can be found under the mbgLtTraps section in the Meinberg MIB. A special trap exists for every notification event the timeserver knows. Please note that the traps are only sent if you configured the notification type "SNMP trap" for the event, otherwise no trap is generated. All traps have a string parameter included, which contains the plain text event message for the appropriate event (you are able to change the default text messages, see web interface and/or CLI setup section to find out how to do this).

Here is a list of all traps the timeserver knows:

- **mbgLtTrapNTPNotSync (mbgLtTraps.1):** Whenever the NTP daemon (ntpd) loses sync, it will generate this trap and send it to the configured SNMP trap receivers.
- **mbgLtTrapNTPStopped (mbgLtTraps.2):** This trap is sent when the NTP daemon stopped, manually or because of an error condition.
- **mbgLtTrapServerBoot (mbgLtTraps.3):** After finishing the boot process, this trap is generated.
- **mbgLtTrapReceiverNotResponding (mbgLtTraps.4):** Trap to be sent when the internal receiver of the timeserver is not responding.
- **mbgLtTrapReceiverNotSync (mbgLtTraps.5):** If the internal receiver loses sync, the SNMP trap receivers will receive this trap.
- **mbgLtTrapAntennaFaulty (mbgLtTraps.6):** This trap will be sent whenever the timeserver recognises a broken connection to the antenna of the receiver.
- **mbgLtTrapAntennaReconnect (mbgLtTraps.7):** After the connection to the antenna has been re-established, this trap is sent.
- **mbgLtTrapConfigChanged (mbgLtTraps.8):** After reloading its configuration, the timeserver generates this trap.
- **mbgLtTrapLeapSecondAnnounced (mbgLtTraps.9):** If a leap second has been announced by the internal GPS receiver, this trap will be sent.
- **mbgLtTrapTestNotification (mbgLtTraps.99):** This trap is sent whenever you are requesting a test notification; it is only used for testing the connection between the timeserver and your SNMP trap receivers.

15 Attachment: Technical Information

15.1 Skilled/Service-Personnel only: Replacing the Lithium Battery

The life time of the lithium battery on the board is at least 10 years. If the need arises to replace the battery, the following should be noted:

ATTENTION!

There is a Danger of explosion if the lithium battery is replaced incorrectly. Only identical batteries or batteries recommended by the manufacturer must be used for replacement.

The waste battery has to be disposed as proposed by the manufacturer of the battery.



CE marking

This device follows the provisions of the directives 93/68/EEC



15.2 Technical Specifications LANTIME M100

HOUSING: Metal desktop case, DIN Mounting Rail
125 mm x 115 mm x 189 mm (W x H x D)

POWER SUPPLY 100-240 VAC (50/60Hz)
100-240 VDC, 19-72 VDC

FUSE: IP20

ENVIRONMENTAL
TEMPERATURE: 0...50 °C

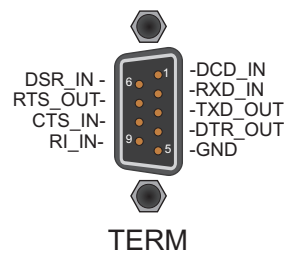
HUMIDITY: 85%

15.3 Front Panel Connectors

Name	Type	Signal	Cable
Network	RJ-45	Ethernet	shielded data line
Antenna	BNC		shielded coaxial line
Power supply	DFK Male		5pin DFK Female
Terminal	9pin. D-SUB	Serial	Serial Cable (Null Modem)
USB	USB	USB 1.1	For connection USB Storage Devices

15.4 TERMINAL (Console)

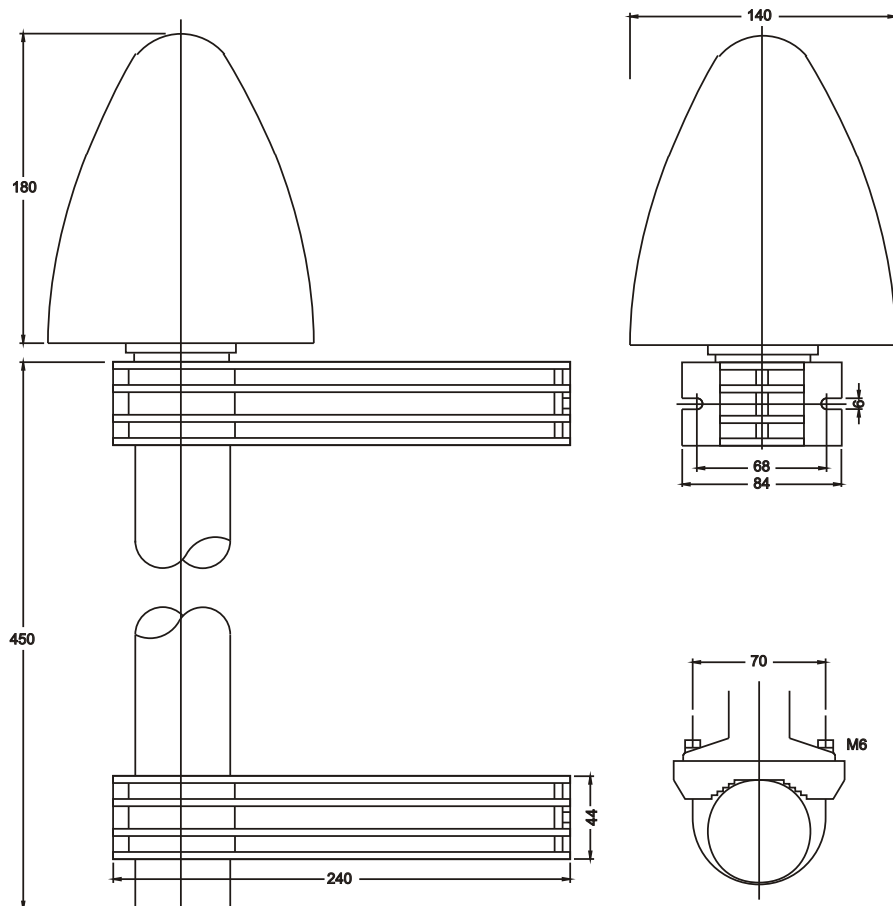
To connect a serial terminal use 9 pin SUBD RS232 connector in the front panel. Via the serial terminal connection it is possible to configure parameters with the command line interface. You have to use a NULL-MODEM cable connecting to your PC or Laptop computer. You can use e.g. the standard Hyperterminal program shipped with your Windows operating system. Configure your terminal program with 38400 Baud, 8 Databits, no parity and 1 Stopbit. The terminal emulation have to set to VT100. After connecting to the timeserver there will be displayed the login message (press RETURN for first connection; default user: root password: timeserver).



15.5 Technical Specifications GPS Antenna

ANTENNA:	dielectrical patch antenna, 25 x 25 mm
	receive frequency: 1575.42 MHz
BANDWIDTH:	9 MHz
CONVERTER:	local oscillator to
	converter frequency: 10 MHz
	first IF frequency: 35.4 MHz
POWER REQUIREMENTS:	12V ... 18V, @ 100mA
	(provided via antenna cable)
CONNECTOR:	N-Type, female
AMBIENT TEMPERATURE:	-40 ... +65°C
HOUSING:	ABS plastic case for outdoor installation (IP66)

Physical Dimension:



15.6 Global Configuration File

This file contains all global parameters of the LANTIME. You can find this file on the write protected flash disk at /mnt/flash/global_configuration:

```
#-----#
#--- Configuration File ---#
#-----#

# Configuration File Section
Configuration File Version Number:      4.17
Configuration File Last Change:

# Network Parameter Section
Hostname                               [ASCII,50] : LanGpsV4
Domainname                             [ASCII,50] : py.meinberg.de
Default IPv4 Gateway                   [IP]      :
Default IPv6 Gateway                   [IP]      :
Nameserver 1                           [IP]      :
Nameserver 2                           [IP]      :
Syslogserver 1                         [ASCII,50] :
Syslogserver 2                         [ASCII,50] :
Telnet Port active                      [BOOL]    : 1
FTP Port active                        [BOOL]    : 1
SSH active                             [BOOL]    : 1
HTTP active                            [BOOL]    : 1
HTTPS active                           [BOOL]    : 1
SNMP active                            [BOOL]    : 1
SAMBA active                           [BOOL]    : 0
IPv6 active                            [BOOL]    : 1

# NTP Section
External NTP Server 1 IP               [ASCII,50] :
External NTP Server 1 KEY              [NUM]     :
External NTP Server 1 AUTOKEY          [BOOL]    :
External NTP Server 2 IP               [ASCII,50] :
External NTP Server 2 KEY              [NUM]     :
External NTP Server 2 AUTOKEY          [BOOL]    :
External NTP Server 3 IP [ASCII,50]    :
External NTP Server 3 KEY              [NUM]     :
External NTP Server 3 AUTOKEY          [BOOL]    :
NTP Stratum Local Clock                [NUM,0..15] : 12
NTP Trusted Key                        [NUM]     :
NTP AUTOKEY feature active             [BOOL]    : 0
NTP ATOM PPS active                    [BOOL]    : 1
NTP Broadcast TCPIP                    [IP]      : 0
NTP Broadcast KEY                      [NUM]     : 0
NTP Broadcast AUTOKEY                  [BOOL]    :
NTP Trust Time                         [NUM]     : 0

# EMail Section
EMail To Address                       [ASCII,50] :
EMail From Address                     [ASCII,50] :
EMail Smarthost                        [ASCII,50] :

# SNMP Section
SNMP Trap Receiver Address 1           [ASCII,50] :
SNMP Trap Receiver Community 1         [ASCII,50] :
SNMP Trap Receiver Address 2           [ASCII,50] :
SNMP Trap Receiver Community 2         [ASCII,50] :
```

```

SNMP V3 User Name           [ASCII,50] : root
SNMP Read Community String  [ASCII,50] : public
SNMP Write Community String [ASCII,50] :
SNMP Contact String         [ASCII,50] : Meinberg
SNMP Location String        [ASCII,50] : Germany

# Windows Messages Section
WMail Address 1             [ASCII,50] :
WMail Address 2             [ASCII,50] :

# VP100 Display Section
VP100 Display Address 1     [ASCII,50] :
VP100 Display Sernum 1      [ASCII,50] :
VP100 Display Address 2     [ASCII,50] :
VP100 Display Sernum 2      [ASCII,50] :

# Notification Section
Notification on NTP_not_sync [CASE] :
Notification on NTP_stopped [CASE] :
Notification on Server_boot [CASE] :
Notification on Refclock_not_respon. [CASE] :
Notification on Refclock_not_sync [CASE] :
Notification on Antenna_faulty [CASE] :
Notification on Antenna_reconnect [CASE] :
Notification on Config_changed [CASE] :
Notification on Leap second announ. [CASE] :

# Ethernet Parameter Section
ETH0 IPv4 TCPIP address     [IP] : 0
ETH0 IPv4 NETMASK           [IP] : 0
ETH0 DHCP CLIENT            [BOOL] : 1
ETH0 IPv6 TCPIP address 1   [IP] :
ETH0 IPv6 TCPIP address 2   [IP] :
ETH0 IPv6 TCPIP address 3   [IP] :
ETH0 IPv6 Autoconf          [BOOL] : 1
ETH0 Net Link Mode          [NUM,0:4] :
ETH0 Bonding Group          [NUM,0:4] :

```

15.7 Global Option File

This file contains all global options for special hardware configuration of the LANTIME. Do not modify this file. You can find this file on the write protected flash disk at `/mnt/flash/global_options`:

```
#GLOBAL OPTIONS
```

```
NUMBER ETHERNET INTERFACES : 1
SYSTEM LAYOUT               : 0
SYSTEM ADV LAYOUT           : 0
SYSTEM LANGUAGE             : 0
SYSTEM PARAMETER            : server
SYSTEM DESIGN               : 0
```

15.8 Third party software

The LANTIME network timeserver is running a number of software products created and/or maintained by open source projects. A lot of people contributed to this and we explicitly want to thank everyone involved for her/his great work.

The used open source software comes with its own license which we want to mention below. If one of the licenses for a third party software product is violated, we will as soon as possible apply any changes needed in order to conform with the corresponding license after we acknowledged about that violation.

If a license for one of the software products states that we have to provide you with a copy of the source code or other material, we will gladly send it to you on data media via normal post or by e-mail upon request. Alternatively we can provide you with a link to a download location in the internet, allowing you to download the most actual version. Please note that we have to charge you for any incurred expenses if you choose to receive the source code on data media.

15.8.1 Operating System GNU/Linux

The distribution of the GNU/Linux operating system is covered by the GNU General Public License (GPL), which we included below.

More information about GNU/Linux can be found on the GNU website
www.gnu.org

and on the website of GNU/Linux
www.linux.org

15.8.2 Samba

The Samba software suite is a collection of programs, which implement the Server Message Block (SMB) protocol for UNIX systems. By using Samba your Lantime is capable of sending Windows popup messages and serves request for network time by clients using the NET TIME command.

The distribution of Samba is covered – like GNU/Linux – by the GNU General Public License, see below.

The website of the Samba project (or a mirror) can be reached at
www.samba.org

15.8.3 Network Time Protocol Version 4 (NTP)

The NTP project, lead by David L. Mills, can be reached in the internet at www.ntp.org. There you will find a wealthy collection of documentation and information covering all aspects of the application of NTP for time synchronization purposes. The distribution and usage of the NTP software is allowed, as long as the following notice is included in our documentation:

```
*****
*
* Copyright (c) David L. Mills 1992-2004
*
* Permission to use, copy, modify, and distribute this software
* and its documentation for any purpose and without fee is hereby
* granted, provided that the above copyright notice appears in all
* copies and that both the copyright notice and this permission
* notice appear in supporting documentation, and that the name
* University of Delaware not be used in advertising or publicity
* pertaining to distribution of the software without specific,
* written prior permission. The University of Delaware makes no
* representations about the suitability this software for any
* purpose. It is provided "as is" without express or implied
* warranty.
*
*****
```

15.8.4 mini_httpd

For our web based configuration tool (HTTP and HTTPS) we use mini_httpd from ACME Labs. The distribution and usage of this program is free provided as long as the following notice appears in the documentation:

Copyright © 2000 by Jef Poskanzer (jef@acme.com). All rights reserved.

Redistribution and use in source and binary forms, with or without modification, are permitted provided that the following conditions are met:

1. Redistributions of source code must retain the above copyright notice, this list of conditions and the following disclaimer.
2. Redistributions in binary form must reproduce the above copyright notice, this list of conditions and the following disclaimer in the documentation and/or other materials provided with the distribution.

THIS SOFTWARE IS PROVIDED BY THE AUTHOR AND CONTRIBUTORS "AS IS" AND ANY EXPRESS OR IMPLIED WARRANTIES, INCLUDING, BUT NOT LIMITED TO, THE IMPLIED WARRANTIES OF MERCHANTABILITY AND FITNESS FOR A PARTICULAR PURPOSE ARE DISCLAIMED. IN NO EVENT SHALL THE AUTHOR OR CONTRIBUTORS BE LIABLE FOR ANY DIRECT, INDIRECT, INCIDENTAL, SPECIAL, EXEMPLARY, OR CONSEQUENTIAL DAMAGES (INCLUDING, BUT NOT LIMITED TO, PROCUREMENT OF SUBSTITUTE GOODS OR SERVICES; LOSS OF USE, DATA, OR PROFITS; OR BUSINESS INTERRUPTION) HOWEVER CAUSED AND ON ANY THEORY OF LIABILITY, WHETHER IN CONTRACT, STRICT LIABILITY, OR TORT (INCLUDING NEGLIGENCE OR OTHERWISE) ARISING IN ANY WAY OUT OF THE USE OF THIS SOFTWARE, EVEN IF ADVISED OF THE POSSIBILITY OF SUCH DAMAGE.

Find out more regarding mini_httpd at the ACME Labs homepage:
www.acme.com

15.8.5 GNU General Public License (GPL)

Version 2, June 1991 - Copyright (C) 1989, 1991

Free Software Foundation, Inc.

675 Mass Ave, Cambridge, MA 02139, USA

Everyone is permitted to copy and distribute verbatim copies of this license document, but changing it is not allowed.

Preamble

The licenses for most software are designed to take away your freedom to share and change it. By contrast, the GNU General Public License is intended to guarantee your freedom to share and change free software—to make sure the software is free for all its users. This General Public License applies to most of the Free Software Foundation's software and to any other program whose authors commit to using it. (Some other Free Software Foundation software is covered by the GNU Library General Public License instead.) You can apply it to your programs, too.

When we speak of free software, we are referring to freedom, not price. Our General Public Licenses are designed to make sure that you have the freedom to distribute copies of free software (and charge for this service if you wish), that you receive source code or can get it if you want it, that you can change the software or use pieces of it in new free programs; and that you know you can do these things.

To protect your rights, we need to make restrictions that forbid anyone to deny you these rights or to ask you to surrender the rights. These restrictions translate to certain responsibilities for you if you distribute copies of the software, or if you modify it.

For example, if you distribute copies of such a program, whether gratis or for a fee, you must give the recipients all the rights that you have. You must make sure that they, too, receive or can get the source code. And you must show them these terms so they know their rights.

We protect your rights with two steps: (1) copyright the software, and (2) offer you this license which gives you legal permission to copy, distribute and/or modify the software.

Also, for each author's protection and ours, we want to make certain that everyone understands that there is no warranty for this free software. If the software is modified by someone else and passed on, we want its recipients to know that what they have is not the original, so that any problems introduced by others will not reflect on the original authors' reputations.

Finally, any free program is threatened constantly by software patents. We wish to avoid the danger that redistributors of a free program will individually obtain patent licenses, in effect making the program proprietary. To prevent this, we have made it clear that any patent must be licensed for everyone's free use or not licensed at all.

The precise terms and conditions for copying, distribution and modification follow.

GNU GENERAL PUBLIC LICENSE TERMS AND CONDITIONS FOR COPYING, DISTRIBUTION AND MODIFICATION

0. This License applies to any program or other work which contains a notice placed by the copyright holder saying it may be distributed under the terms of this General Public License. The "Program", below, refers to any such program or work, and a "work based on the Program" means either the Program or any derivative work under copyright law: that is to say, a work containing the Program or a portion of it, either verbatim or with modifications and/or translated into another language. (Hereinafter, translation is included without limitation in the term "modification".) Each licensee is addressed as "you".

Activities other than copying, distribution and modification are not covered by this License; they are outside its scope. The act of running the Program is not restricted, and the output from the Program is covered only if its contents constitute a work based on the Program (independent of having been made by running the Program). Whether that is true depends on what the Program does.

1. You may copy and distribute verbatim copies of the Program's source code as you receive it, in any medium,

provided that you conspicuously and appropriately publish on each copy an appropriate copyright notice and disclaimer of warranty; keep intact all the notices that refer to this License and to the absence of any warranty; and give any other recipients of the Program a copy of this License along with the Program.

You may charge a fee for the physical act of transferring a copy, and you may at your option offer warranty protection in exchange for a fee.

2. You may modify your copy or copies of the Program or any portion of it, thus forming a work based on the Program, and copy and distribute such modifications or work under the terms of Section 1 above, provided that you also meet all of these conditions:

a) You must cause the modified files to carry prominent notices stating that you changed the files and the date of any change.

b) You must cause any work that you distribute or publish, that in whole or in part contains or is derived from the Program or any part thereof, to be licensed as a whole at no charge to all third parties under the terms of this License.

c) If the modified program normally reads commands interactively when run, you must cause it, when started running for such interactive use in the most ordinary way, to print or display an announcement including an appropriate copyright notice and a notice that there is no warranty (or else, saying that you provide a warranty) and that users may redistribute the program under these conditions, and telling the user how to view a copy of this License. (Exception: if the Program itself is interactive but does not normally print such an announcement, your work based on the Program is not required to print an announcement.)

These requirements apply to the modified work as a whole. If identifiable sections of that work are not derived from the Program, and can be reasonably considered independent and separate works in themselves, then this License, and its terms, do not apply to those sections when you distribute them as separate works. But when you distribute the same sections as part of a whole which is a work based on the Program, the distribution of the whole must be on the terms of this License, whose permissions for other licensees extend to the entire whole, and thus to each and every part regardless of who wrote it.

Thus, it is not the intent of this section to claim rights or contest your rights to work written entirely by you; rather, the intent is to exercise the right to control the distribution of derivative or collective works based on the Program.

In addition, mere aggregation of another work not based on the Program with the Program (or with a work based on the Program) on a volume of a storage or distribution medium does not bring the other work under the scope of this License.

3. You may copy and distribute the Program (or a work based on it, under Section 2) in object code or executable form under the terms of Sections 1 and 2 above provided that you also do one of the following:

a) Accompany it with the complete corresponding machine-readable source code, which must be distributed under the terms of Sections 1 and 2 above on a medium customarily used for software interchange; or,

b) Accompany it with a written offer, valid for at least three years, to give any third party, for a charge no more than your cost of physically performing source distribution, a complete machine-readable copy of the corresponding source code, to be distributed under the terms of Sections 1 and 2 above on a medium customarily used for software interchange; or,

c) Accompany it with the information you received as to the offer to distribute corresponding source code. (This alternative is allowed only for noncommercial distribution and only if you received the program in object code or executable form with such an offer, in accord with Subsection b above.)

The source code for a work means the preferred form of the work for making modifications to it. For an executable work, complete source code means all the source code for all modules it contains, plus any associated interface definition files, plus the scripts used to control compilation and installation of the executable. However, as a special exception, the source code distributed need not include anything that is normally distributed (in either source or binary form) with the major components (compiler, kernel, and so on) of the operating system on which the executable runs, unless that component itself accompanies the executable.

If distribution of executable or object code is made by offering access to copy from a designated place, then offering equivalent access to copy the source code from the same place counts as distribution of the source code, even though third parties are not compelled to copy the source along with the object code.

4. You may not copy, modify, sublicense, or distribute the Program except as expressly provided under this License. Any attempt otherwise to copy, modify, sublicense or distribute the Program is void, and will automatically terminate your rights under this License. However, parties who have received copies, or rights, from you under this License will not have their licenses terminated so long as such parties remain in full compliance.

5. You are not required to accept this License, since you have not signed it. However, nothing else grants you permission to modify or distribute the Program or its derivative works. These actions are prohibited by law if you do not accept this License. Therefore, by modifying or distributing the Program (or any work based on the Program), you indicate your acceptance of this License to do so, and all its terms and conditions for copying, distributing or modifying the Program or works based on it.

6. Each time you redistribute the Program (or any work based on the Program), the recipient automatically receives a license from the original licensor to copy, distribute or modify the Program subject to these terms and conditions. You may not impose any further restrictions on the recipients' exercise of the rights granted herein. You are not responsible for enforcing compliance by third parties to this License.

7. If, as a consequence of a court judgment or allegation of patent infringement or for any other reason (not limited to patent issues), conditions are imposed on you (whether by court order, agreement or otherwise) that contradict the conditions of this License, they do not excuse you from the conditions of this License. If you cannot distribute so as to satisfy simultaneously your obligations under this License and any other pertinent obligations, then as a consequence you may not distribute the Program at all. For example, if a patent license would not permit royalty-free redistribution of the Program by all those who receive copies directly or indirectly through you, then the only way you could satisfy both it and this License would be to refrain entirely from distribution of the Program.

If any portion of this section is held invalid or unenforceable under any particular circumstance, the balance of the section is intended to apply and the section as a whole is intended to apply in other circumstances.

It is not the purpose of this section to induce you to infringe any patents or other property right claims or to contest validity of any such claims; this section has the sole purpose of protecting the integrity of the free software distribution system, which is implemented by public license practices. Many people have made generous contributions to the wide range of software distributed through that system in reliance on consistent application of that system; it is up to the author/donor to decide if he or she is willing to distribute software through any other system and a licensee cannot impose that choice.

This section is intended to make thoroughly clear what is believed to be a consequence of the rest of this License.

8. If the distribution and/or use of the Program is restricted in certain countries either by patents or by copyrighted interfaces, the original copyright holder who places the Program under this License may add an explicit geographical distribution limitation excluding those countries, so that distribution is permitted only in or among countries not thus excluded. In such case, this License incorporates the limitation as if written in the body of this License.

9. The Free Software Foundation may publish revised and/or new versions of the General Public License from time to time. Such new versions will be similar in spirit to the present version, but may differ in detail to address new problems or concerns.

Each version is given a distinguishing version number. If the Program specifies a version number of this License which applies to it and "any later version", you have the option of following the terms and conditions either of that version or of any later version published by the Free Software Foundation. If the Program does not specify a version number of this License, you may choose any version ever published by the Free Software Foundation.

10. If you wish to incorporate parts of the Program into other free programs whose distribution conditions are different, write to the author to ask for permission. For software which is copyrighted by the Free Software Foundation, write to the Free Software Foundation; we sometimes make exceptions for this. Our decision will be guided by the two goals of preserving the free status of all derivatives of our free software and of promoting the sharing and reuse of software generally.

NO WARRANTY

11. BECAUSE THE PROGRAM IS LICENSED FREE OF CHARGE, THERE IS NO WARRANTY FOR THE PROGRAM, TO THE EXTENT PERMITTED BY APPLICABLE LAW. EXCEPT WHEN OTHERWISE STATED IN WRITING THE COPYRIGHT HOLDERS AND/OR OTHER PARTIES PROVIDE THE PROGRAM "AS IS" WITHOUT WARRANTY OF ANY KIND, EITHER EXPRESSED OR IMPLIED, INCLUDING, BUT NOT LIMITED TO, THE IMPLIED WARRANTIES OF MERCHANTABILITY AND FITNESS FOR A PARTICULAR PURPOSE. THE ENTIRE RISK AS TO THE QUALITY AND PERFORMANCE OF THE PROGRAM IS WITH YOU. SHOULD THE PROGRAM PROVE DEFECTIVE, YOU ASSUME THE COST OF ALL NECESSARY SERVICING, REPAIR OR CORRECTION.

12. IN NO EVENT UNLESS REQUIRED BY APPLICABLE LAW OR AGREED TO IN WRITING WILL ANY COPYRIGHT HOLDER, OR ANY OTHER PARTY WHO MAY MODIFY AND/OR REDISTRIBUTE THE PROGRAM AS PERMITTED ABOVE, BE LIABLE TO YOU FOR DAMAGES, INCLUDING ANY GENERAL, SPECIAL, INCIDENTAL OR CONSEQUENTIAL DAMAGES ARISING OUT OF THE USE OR INABILITY TO USE THE PROGRAM (INCLUDING BUT NOT LIMITED TO LOSS OF DATA OR DATA BEING RENDERED INACCURATE OR LOSSES SUSTAINED BY YOU OR THIRD PARTIES OR A FAILURE OF THE PROGRAM TO OPERATE WITH ANY OTHER PROGRAMS), EVEN IF SUCH HOLDER OR OTHER PARTY HAS BEEN ADVISED OF THE POSSIBILITY OF SUCH DAMAGES.

END OF TERMS AND CONDITIONS

15.9 Reference

- [Mills88]** Mills, D. L., "Network Time Protocol (Version 1) - specification and implementation", DARPA Networking Group Report RFC-1059, University of Delaware, July 1988
- [Mills89]** Mills, D. L., "Network Time Protocol (Version 2) - specification and implementation", DARPA Networking Group Report RFC-1119, University of Delaware, September 1989
- [Mills90]** Mills, D. L., "Network Time Protocol (Version 3) - specification, implementation and analysis", Electrical Engineering Department Report 90-6-1, University of Delaware, June 1989
- Kardel, Frank, "Gesetzliche Zeit in Rechnernetzen", Funkuhren, Zeitsignale und Normalfrequenzen, Hrsg. W. Hilberg, Verlag Sprache und Technik, Groß-Bieberau 1993
- Kardel, Frank, "Verteilte Zeiten", ix Multiuser-Multitasking-Magazin, Heft 2/93, Verlag Heinz Heise, Hannover 1993

Konformitätserklärung

Declaration of Conformity

Doc ID: M100/GPS-14032013

Hersteller
Manufacturer

Meinberg Funkuhren GmbH & Co. KG
Lange Wand 9
D-31812 Bad Pyrmont

erklärt in alleiniger Verantwortung, daß das Produkt
declares under its sole responsibility, that the product

Produktbezeichnung
Product Designation

Lantime M100/GPS

auf das sich diese Erklärung bezieht, mit den folgenden Normen übereinstimmt
to which this declaration relates is in conformity with the following standards

EN55022:2010, Class A	Limits and methods of measurement of radio interference characteristics of information technology equipment
EN55024:2010	Limits and methods of measurement of Immunity characteristics of information technology equipment
EN 50581:2012	Technical documentation for the assessment of electrical and electronic products with respect to the restriction of hazardous substances

gemäß den Richtlinien 2004/108/EG (Elektromagnetische Verträglichkeit), 2006/95/EG (Niederspannungsrichtlinie), 2011/65/EU (Beschränkung der Verwendung bestimmter gefährlicher Stoffe) und 93/68/EWG (CE Kennzeichnung) sowie deren Ergänzungen.
following the provisions of the directives 2004/108/EC (electromagnetic compatibility), 2006/95/EC (low voltage directive), 2011/65/EU (restriction of the use of certain hazardous substances) and 93/68/EEC (CE marking) and its amendments.

Bad Pyrmont, den 14.03.2013



Günter Meinberg
Managing Director